



AQUADESIGN  
MANUFACTURING

Public Restroom Design Guide



LAV9C3000-L70 – Five User LAV9  
with Line 70 Push Button Faucets

Universal Principles:

## Bathroom Design Checklist

When designing a public restroom, there are some universal principles across the spectrum of bathroom design. We care about these universal principles when it comes to restrooms as each element is interrelated and dependent on the others.

### Sustainability

It makes sense to choose materials and fixtures that will last the intended life of the bathroom. Using durable materials and fixtures with a longer warranty is a logical choice.

- AquaDesign's solid surface is a commercially blended material that is engineered to be highly durable, extremely hygienic, and provide years of maintenance-friendly service. Our proprietary blend of compounds has been formulated to offer an unmatched level of quality.

#### Advantages of solid surface:

- The seamless composition of the material will prevent dirt and debris from collecting and forming bacteria.
- The material is homogeneous, and therefore, its color and anti-microbial composition are consistent throughout.
- It is engineered to resist damage from stains, burns, scratches, and vandalism.
- It can be easily maintained with common cleaning agents and a light buffing to renew the finish.





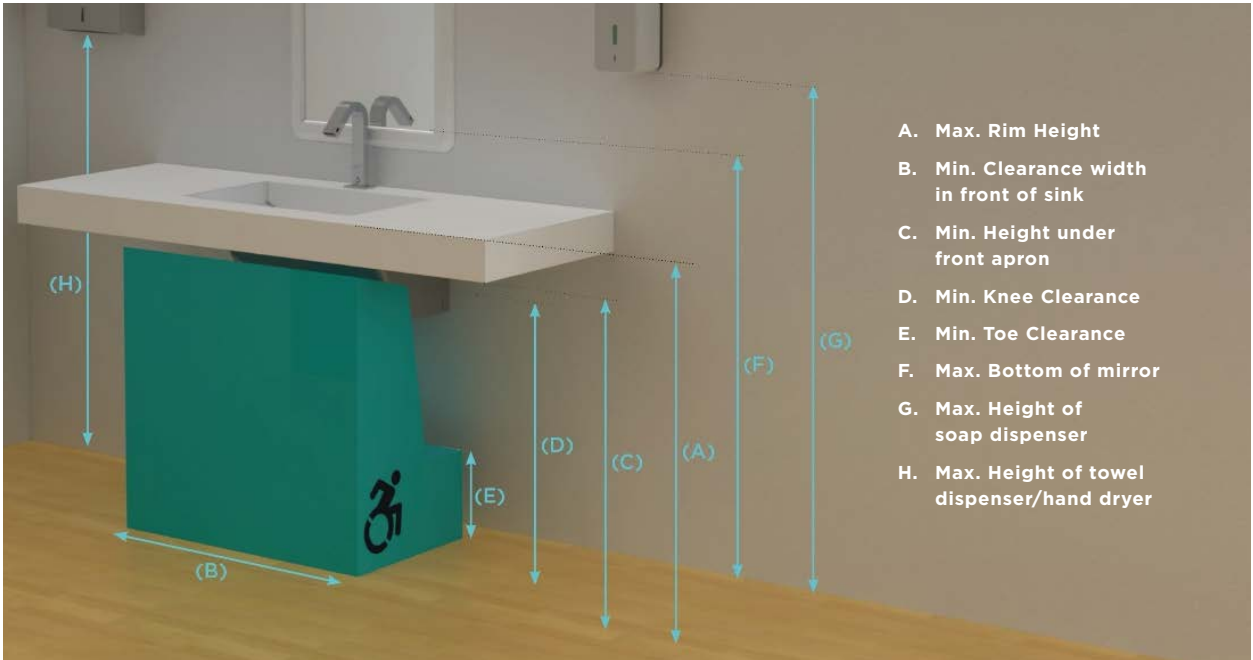
ISO554-LN-BP-SB – Five User Sanispray  
with Sensor Water and Soap

✓ [Accessibility](#)

When designing a public restroom, designers must be aware of ADA standards and other accessibility standards. These include:

- **Circulation paths and maneuverability:** As you move through the designed areas, carefully consider the entrance to and travel about the restroom. Obstacles may need to be removed to create an acceptable path for wheelchair users.
- **Reach ranges:** Consider users of all heights as well as wheelchair users. Mounting heights for sinks, hand dryers, grab bars, and other fixtures should be reachable and unobstructed for all users.
- **Mirrors:** Mirrors located above lavatories or countertops shall be installed with the bottom edge of the reflecting surface low enough that wheelchair users can use them.
- **Door swings:** Maneuvering clearances should extend the full width of the doorway and the required latch-side or hinge-side clearance.
- **Clear floor space:** Lavatories should allow for an open, easy approach.

Accessibility Standards for the USA and Canada				
	USA	Canada		
	ADA	Ontario	Alberta/ British Columbia	Québec
A	34"	840 mm	865 mm	
B	30"	920 mm	760 mm	
C	27"	735 mm		
D	27"	685 mm		
E	9"	350 mm	230 mm	
F	40"	1100 mm	1000 mm	
G	48"	1100 mm	1200mm	
H	48"	1200 mm		





## ✓ Safety

Wet floors are a slipping hazard. Water can drip from wet hands on the way to the towel dispenser or hand dryer. It is important to put the dryer or dispenser close to the sink. Another solution to mitigate the risk of wet floors is using a handwash dryer that delivers water, soap, and dries the hands all in one location.

## ✓ Hygiene

- **Hands-free fixtures such as water faucets and soap dispensers are designed to avoid contact with surfaces to lessen the risk of cross-contamination.** Combination units like touch-free water and soap or touch-free water, soap, and hand dryers are great options because users can use soap, wash, and dry their hands in a restroom without touching anything.
- **Restrooms, with their warm temperatures and humid air, are the ideal environment for disease-causing pathogens.** Throw in infrequent cleaning schedules and grimy surfaces, and you have the perfect recipe for infectious illnesses. Antibiotic-resistant microbes, as well as fungi, mold, and mildew, can live on surfaces for several days. Installing bacterial-resistant fixtures for restrooms can greatly reduce pathogens on surfaces and improve safety.
- **Antimicrobial solid-surface fixtures for restrooms are recommended for optimal hygiene.** Most AquaDesign fixtures are available with an anti-microbial agent. The antimicrobial agent is present in the inside and outside of the material and won't dissipate or scratch off. Upon contact with moisture, positively charged ions attract negatively charged microbes, disrupting their electrical balance and killing the organism.



LRS21-ADM21 - White Powder Coated LRS21  
with Vandal Resistant ADM21 Sensor Faucet and  
U700150 - Wall Mounted Sensor Soap Dispenser





### ✓ Maintenance

A functional restroom should be easy to clean and maintain. At the design stage, the color and type of the walls, tiles, floors, ceiling, and fixtures should be chosen with safety, durability, and maintenance in mind. Regular cleaning and inspection not only ensure a pleasant environment but also guarantees that fixtures last a long time. Facilities can save thousands of dollars each year when restrooms are properly designed.

### ✓ Allowing for Diversity

Public restrooms need to cater to the special needs of people from different cultures or walks of life.

- A public restroom needs to accommodate people with children of all ages, including those who need to have their diaper changed. Providing sinks with baby changing stations in both the women's and the men's restroom is not a luxury anymore.
- Even if elderly individuals can still walk, it is important to consider wheelchair use when sizing spaces. A well-designed and spacious wheelchair-accessible bathroom also improves circulation. Higher toilets and grab bars are often a huge help for seniors.



## Solidwave Original

The Solidwave Original is a uniquely designed lavatory system that offers functionality and aesthetics through the combination of solid surface and stainless steel. The Solidwave has soft, rounded shapes for user comfort and offers an ideal design solution for the public washroom.

The Solidwave is fully modular — i.e., units can be built in ranges while access paneling is fixed to adjacent frames in an uninterrupted continuous and flowing line. This allows the Solidwave Original to accommodate an infinite number of users.

The Solidwave Original is available for one to three users, either with a stainless steel spray head or with one of Intersan's many faucet and soap options.

- Single, two, and three user models
- 6 faucet options
- 2 water distribution head options: sensor and push button
- 15 available bowl colors
- Modular design



SWV02-L13-SD12-PW – 2 x Two User Polar White  
Solidwave Original Lavatory with Line 13 Sensor  
Faucet and Line 12 Sensor Soap Dispenser





## Solidwave Classic

If you desire a more traditional, American look, the AquaDesign Solidwave Classic is the perfect fit. Ideal for retrofits and remodels, the Solidwave Classic can be configured for one, two, or three users.

The Solidwave Classic adds an updated traditional feel in a wide variety of applications and settings from public restrooms to office and retail facilities. Pre-plumbed and pre-assembled, the Classic also offers a wide choice of faucet styles for exactly the right final touch.

- Single, two, and three user models
- 6 faucet options
- 15 available bowl colors



SDC03-L12-PW – Three User Solidwave Classic with Line 12 Sensor Faucet and Custom Black Powder Coated Skirt



### Solidwave High-Low

Welcome to the new paradigm for commercial lavatory systems. Introducing AquaDesign's Solidwave High-Low. This innovative lavatory system was engineered to allow the designer to specify a beautiful contemporary work of art. The Solidwave High-Low has exceptional installation versatility and long-lasting, guaranteed product quality for a surprisingly competitive price.

Solidwave High-Low offers several unique advantages, including ADA-compliant sink heights for both juveniles and adults in the same unit, a four-user model, and an available baby change station.

- 7 configurations
- 6 faucet options
- 2 soap options
- 15 available bowl colors
- Baby changer option



SWV4H-OML-PW – Four User Solidwave High Low with Custom Powder Coated Omnia Water & Soap Sensor Faucet and Custom Black Powder Coated Skirt





## Streamlav Legacy

The Streamlav Legacy is a highly contemporary yet affordable handwash station that is not only functional for the user but also focuses on reducing maintenance issues for years to come. The clean lines and the continuous bowl of the Streamlav Legacy make it easy to clean.

The Legacy is available with a vandal resistant, water-distribution head or with standard low-flow sensor or manual faucets.

- Available for one, two, or three users
- 6 faucet options
- Sensor water distribution head option
- 15 available bowl colors
- With or without stainless steel skirt
- ADA compliant



SL02-B-L13-SD12-PW - Two User Polar White Streamlav Legacy with Line 13 Sensor Faucet and Line 12 Sensor Soap Dispenser



## Streamlav View

The Streamlav View was designed to bring exceptional contemporary style to any space. Beautifully molded in solid surface, the Streamlav View combines form and function into an aesthetically pleasing sink.

You can choose lengths from 30 to 120 inches for one, two, three, or four users. In fact, we can manufacture the Streamlav View to fit the exact length required.

- 4 standard sizes
- Custom sizes from 30" to 120"
- 6 faucet options
- 2 soap options
- 5 available bowl colors
- Baby changer option



SLV04-B-L13-AW – Four User Streamlav View  
with Stainless Steel Skirt and Line 13 Sensor Faucet





## Streamlav Wing

The Streamlav Wing is the ultimate in customizable lavatory designs. Why design your space around existing lavatory models? The Streamlav Wing can deliver the exact length, options, and style you want.

How many users do you need to serve? Choose from one to three users.

What length do you need? Choose units from 30 to 120 inches long.

Do you prefer a classic or contemporary look? Choose rounded or square corners.

Would you prefer an asymmetrical wing to the right or left? Or wings with round or square trashcan holes? AquaDesign's Streamlav Wing can be ordered in any of these configurations.

- 3 standard sizes
- Custom sizes from 30" to 120"
- 6 faucet options
- 2 soap options
- 15 available bowl colors



SLW02-B-L15R15-L13-PW - 90" Long Two User Streamlav Wing with Stainless Steel Skirt and Line 13 Sensor Faucet



## Saniwave

The Saniwave is designed in such a way that it is a fully modular system. The lavatories can either be installed individually or in ranges. A separate shelf allows the Saniwave to be installed as a single lavatory or as multiple connected lavatories with up to 40" centers.

The Saniwave is the ideal solution for equipping public washrooms where design, modular layout, and accessibility are very important.

- Single unit with shelves: up to 36"
- Modular installation with faucets up to 40" centers
- Vandal-resistant overflow
- 6 faucet options
- 15 available bowl colors



3 x SANIW-L13-PW - Polar White  
Saniwave with Line 13 Sensor Faucet





## Modus

The Modus Lavatory System allows you to design a space without having to undergo a major remodel. This modular lavatory system adapts itself to any restroom layout without hassle.

Custom-sized shelves enable you not only to have much-needed countertop space but also to have a wall-to-wall lavatory system that looks like it is custom-made.

- 3 standard sizes
- 6 faucet options
- 2 soap options
- 15 available bowl colors
- Customizable shelf lengths
- Baby changer option



MOD25-B-OML-PW and -BC - 25" Single User Polar White Modus with Omnia Sensor Soap and Water Faucet with Modus Baby Changer



ThrII

The ThrII by AquaDesign combines all the processes of proper handwashing into one unique space-saving design.

- On-demand water heater
- Foam or liquid soap
- Onboard hand dryer
- Run time set by facility maintenance
- Vandal-resistant design
- Reduce consumption of single used paper towels
- Cost savings



THRII-PB - Pearl Black ThrII Hand Wash Dryer





## Sanifount

The Sanifount is a mainstay in many public restrooms. With the unique space-saving design, it works well in both the restroom and the communal space. By moving the handwashing to a communal space, you reduce the amount of vandalism.

The Sanifount is fully enclosed to help prevent the stashing of contraband. The lack of a countertop prevents patrons from sitting on the sink.

- Two, three, or four user models
- Pushbutton, sensor, or electronic touch button activation
- 15 available colors
- Vandal-resistant overflow
- ADA compliant



*SANIF3-SEN-PW - Three User Polar White Sanifount  
with Water and Soap Sensor Distribution Head*



## Sanispray

Sanispray wash fountains take up significantly less space than lavatories of equal capacity. They can handle large groups of people simultaneously and offer an efficient traffic pattern in large washrooms. AquaDesign's wash fountains save up to 30% in floor and wall space compared to an equal number of traditional lavatories.

AquaDesign has wash fountains in all sizes and shapes so that the best fit for each washroom can be found.

- Three, four, five, six, and eight user models
- 3 different pedestal heights
- Foot, pushbutton, sensor, or electronic touch button activation
- Corner, semi-circular, and circular models
- Wall-hung and floor-mounted models
- Stainless and solid surface bowls
- 15 available colors
- ADA compliant models



ISO554-LN-BP-SB - Five User Sanispray  
with Sensor Water and Soap



## Wash Basin 1.0

The Wash Basin 1.0 was designed to meet the high demands of the 21st-century washroom with an unparalleled contemporary aesthetic.

The Wash Basin 1.0 was designed to fit perfectly in narrow washroom spaces and can accommodate from two to five users. To increase its functionality in the modern commercial restroom, the Wash Basin 1.0 is designed to allow for the placement of a 2.5-gallon bucket to assist maintenance professionals with the everyday cleaning of a restroom facility.

- Available from 1 to 5 users
- 5 faucet options
- 304 stainless steel
- Seamless welding on the inside
- Custom color powder coating
- Indoor or outdoor use



13M15-S15-D15 - Three User Line 1 Wash Basin  
with Sensor Soap, Water, and Hand Dryer



## Wash Basin 5.0

Over the years, the wash basins from AquaDesign have varied by name, but one name has remained true: durable.

The Wash Basin 5.0 is the culmination of years of AquaDesign knowledge and expertise to design a state-of-the-art lavatory with all the features that the market demands. The Wash Basin 5.0 is not only designed to have a long life, but more importantly, it is 100% recyclable when it reaches its end of usefulness.

The Wash Basin 5.0 takes commercial stainless to a modern aesthetic that will fit in a variety of applications, including education and parks & recreation.

- Available from 1 to 5 users
- 6 faucet options
- 304 stainless steel
- Seamless welding on the inside
- Custom color powder coating
- Indoor or outdoor use



50-L13-SD13 - Five User Line 5 Wash Basin  
with Line 13 Sensor Faucets and Line 12 Sensor  
Soap Dispensers



## LAV9 Stainless Sinks

AquaDesign's LAV9 series of lavatories is an affordable yet durable solution for public restrooms. The LAV9 lavatories are manufactured from stainless steel and combine unique design and functionality.

The bowl of the lavatory is in the shape of an ellipse, and all edges of the lavatory are softly rounded. This combination blends the continuity of the design with the hygienic safety and comfort of the user.

The seamlessly welded construction prevents the accumulation of dirt and germs, and the smooth, ellipsoidal surface allows the lavatory to be self-draining, resulting in a cleaner and more hygienic fixture.

- Available from 1 to 5 users
- 6 faucet options
- 304 stainless steel
- Seamlessly welded bowl
- Indoor or outdoor use



LAV9C3000-L70 - Five User LAV9  
with Line 70 Push Button Faucets





## LRS21

The stainless LRS21 offers a solution for those restrooms that may need more robust fixtures. The LRS21 is constructed from 14-gauge stainless steel. It is available as a standard stainless-steel version or can be powder coated in white or any other custom color.

- 2 faucet options
- 304 stainless steel
- Seamlessly welded bowl
- Indoor or outdoor use



LRS21-ADM21 - White Powder Coated LRS21  
with Vandal Resistant ADM21 Sensor Faucet and  
U700150 - Wall Mounted Sensor Soap Dispenser

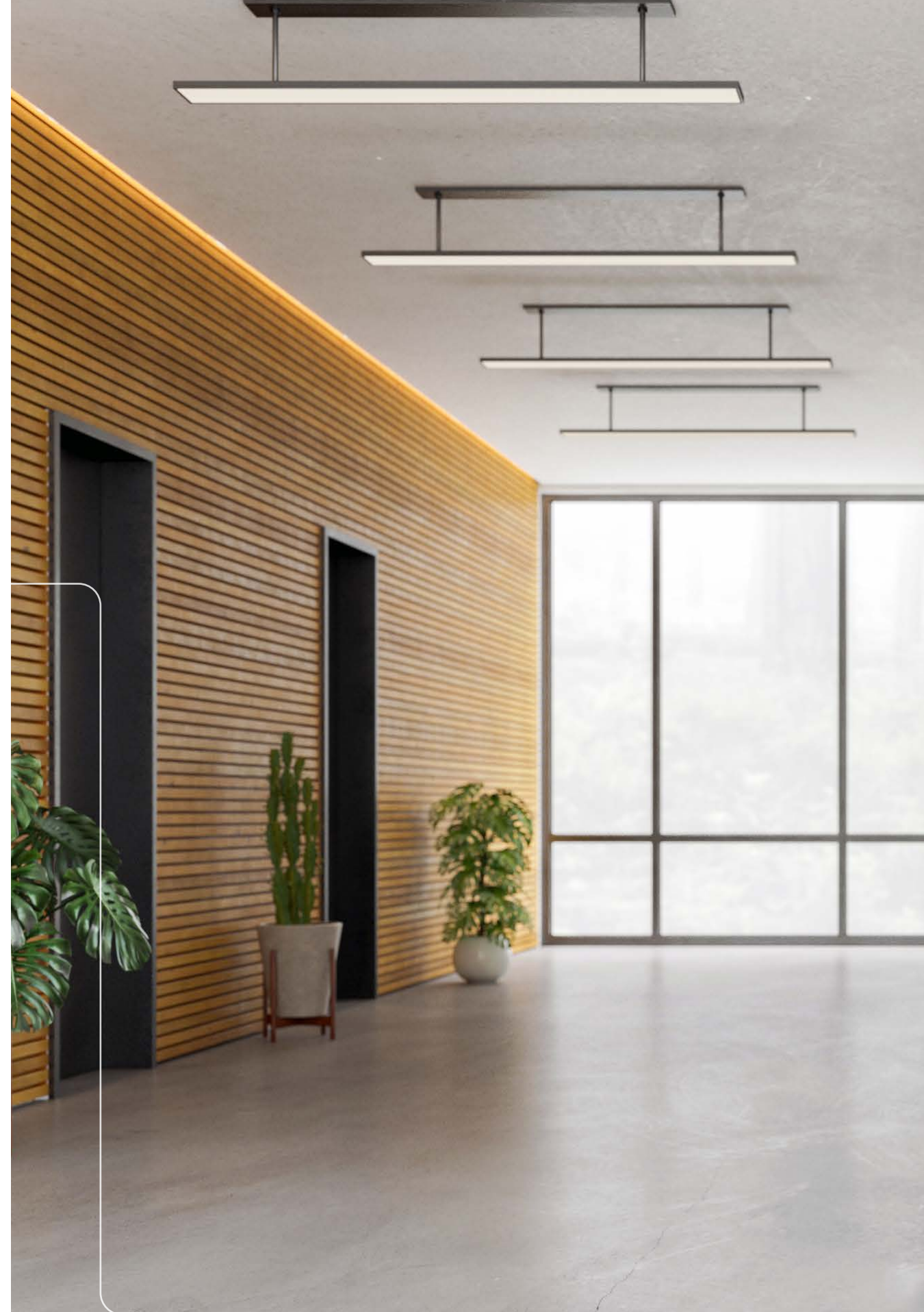


## LAV20

The LAV20 lets your customers, employees, or students know that their safety is not an afterthought. Features such as bag hooks, a mirror-finished towel dispenser, and a spout with plenty of clearance make this handwashing station stand out above the rest.

The unit has large capacity 10.5-gallon freshwater and greywater tanks and a soap dispenser with a 1.6 qt. reservoir. This means less pressure on the janitorial staff. The large wheels make rolling the LAV20 over thresholds a piece of cake.

- Customizable color
- 2 bag hooks
- 10.5-gallon grey and freshwater tank
- Mirror finished towel dispenser
- 1/4" thick powder-coated aluminum
- Foot pump operated
- Sensor foam soap dispenser with 1.6 qt reservoir



LAV20-CUS - Mobile Handwash Station  
in Custom Color







## Omnia

AquaDesign's Omnia is a countertop mounted hand dryer tap and a water and soap dispenser faucet, all ready to work together as one beautiful, touch-free, hygienic and highly efficient system.

The Omnia handwashing system is designed to avoid water splashing on the floor, to save space and to spend less time inside the washroom.

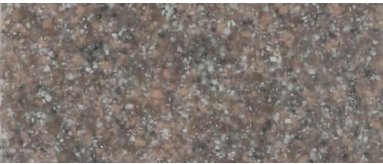
- Fully touch free
- Space and cost saving
- Programmable soap dose



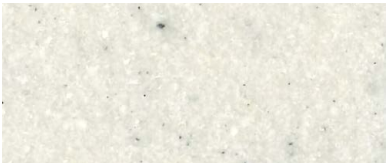
SL03-B-OMD-OML - 3-user Streamlav Legacy  
with Omnia Deck Mounted Handwash Dryer



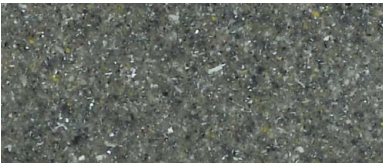
Standard Colors



Adobe Brown



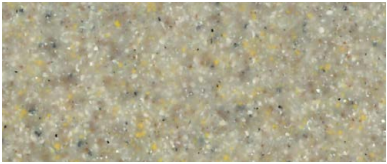
Ash White



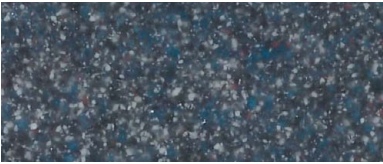
Black Forest



Concrete Gray



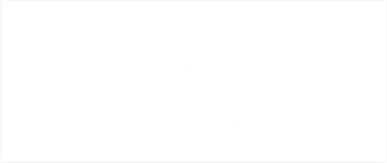
Egyptian Sand



Midnight Blue



Misty Gray



Polar White



Sandstone

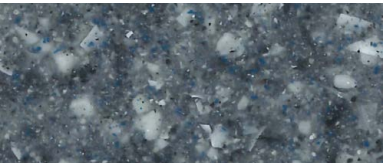


Twilight Gray



Pearl Black

Designer Colors



Belgian Blue



Sydney Rock Oyster



Montreal Quartz



Paris Stone



SLV01-L15R15-L13-SD12 - Streamlav View with Line 13  
Sensor Faucet and Line 12 Sensor Soap Dispenser



Application Guide

Application Guide	ADA	Commercial									Institutional							Industrial				
		Office	Grocery Store	Shopping Mall	Restaurant	Bar	Club	Hotel	Resort		K12	Colleges & Universities	Religious	Stadium	Racetrack	Amusement Park	Airport & Railway Station	Manufacturing	Warehouse	Shop Area	Food Prep	Clean Room
Lavatory Systems																						
Solidwave Original	•	•	•	•	•	•	•	•	•			•	•	•	•	•	•					
Solidwave Classic	•	•	•	•	•	•	•	•	•				•			•						
Solidwave High-Low	•		•	•	•			•	•			•	•	•	•	•	•					
Streamlav Legacy	•	•	•	•	•	•	•	•	•			•	•	•	•	•	•					
Streamlav View	•	•	•	•	•	•	•	•	•			•	•	•	•	•	•					
Streamlav Wing	•	•			•	•	•	•					•	•	•	•	•					
Saniwave	•	•	•	•	•							•	•		•	•	•					
Modus	•	•		•	•	•	•	•	•				•	•								
Thrii																						
Thrii	•*	•	•	•	•	•	•	•	•			•	•		•	•	•	•				
Washfountains																						
Sanifount	•	•		•								•	•	•	•	•	•	•	•		•	
Sanispray Collective	•*																	•	•	•	•	•
Sanispray Individual	•*	•		•								•						•	•	•	•	•
Wash Basins																						
Series 1	•	•	•		•		•		•			•	•		•	•	•	•	•	•	•	•
Series 5	•	•	•		•		•		•			•	•		•	•	•	•	•	•	•	•
Stainless Steel Lavs																						
LAV9			•	•	•		•		•						•	•	•	•	•	•	•	
Hand Washing Stations																						
LAV20			•					•	•			•	•		•							
Faucets																						
Line 12	•	•	•	•	•	•	•	•	•			•	•	•	•	•	•	•	•			•
Line 13	•	•	•	•	•	•	•	•	•			•	•	•	•	•	•	•	•			•
Omnia	•	•	•	•	•	•	•	•	•				•	•	•	•	•				•	•
Line 70	•	•	•	•								•	•	•	•	•	•	•	•			
M15	•				•	•	•	•	•				•	•	•	•	•				•	•
Soap Systems																						
Line 12	•	•	•	•	•	•	•	•	•			•	•	•	•	•	•	•	•			•
SD15	•				•	•	•	•	•				•	•	•	•	•				•	•
HSD20	•	•	•	•	•	•	•	•	•			•	•	•	•	•	•					

\* Select models only





**AQUADESIGN**  
MANUFACTURING

[AquaDesignMfg.com](http://AquaDesignMfg.com)  
800 • 999 • 3101  
[info@AquaDesignMfg.com](mailto:info@AquaDesignMfg.com)