

CWC156 Series

CWC156-AST

Behavioral Healthcare Toilet

Dimensions	Water Use	Certifications	Technical	Barrier Free
16" x 29 ^{1/2} " x 17 ^{1/2} "	Required waterflow: 0.48 - 0.52 gal/sec	ISO EN 19712-3-2007 - Rated 5 UK Ministry of Justice Safer Cell Approval BREEAM Rated	Drain: 4" Flush Inlet: 1½"	ADA TAS BC Building Code Ontario Barrier Free

Material & Construction

The CWC-156 series is a ligature and vandal resistant solid surface back-to-wall toilet. It comes with hidden activations and is intended for through-the-wall installation.

The CWC156-AST is made of highly damage-resistant, high grade solid surface material. All models are of domestic appearance to assist in normalising the environment. Where necessary they are anti-ligature in design. The -AST models have a permanently bonded non-movable, anti-ligature solid surface seat.

The CWC range of toilets has been used throughout secure environments for over 10 years.

Standard Equipment

Fixture in solid surface material, steel mounting hardware, inlet seal, elbow waste adaptor, straight waste adaptor and 2" offset connector. The water management controller and the flush valve need to be ordered separate.

Water Management

The water is most effectively managed by Wallgate by AquaDesign's comprehensive WDCA range of electronic controllers in conjunction with the piezo or sensor activation of the ALSA wash basin.

The electronic controllers include timed flow, flow regulators and lockout programs. Flow restrictors ensure that the flow of water is precisely regulated allowing to contribute to LEED credits.

Flushing

The CWC-156 toilet is designed for up 1.58 gallon flushes.

The CWC-156 is compatible with all flush methods and can be activated by mechanical, electronic, pneumatic or infrared methods.

Flush control is most effectively managed by Wallgate by AquaDesign's WDCA range of electronic controllers which include dual flush, timed flow and lockout programs, enabling maximum contribution to LEED credits.

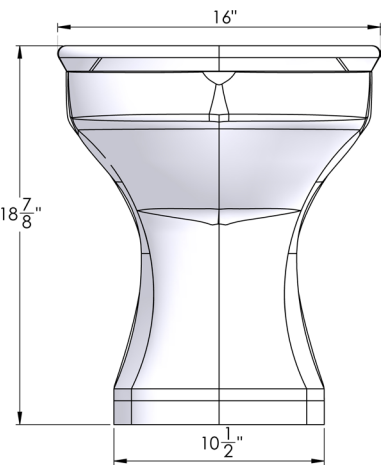
Technical Specifications

- Drainsize: 4"
- Flush pipe inlet: 1 1/2" pipe and seal
- ISO EN 19712-3-2007 rated 5 for durability, stain resistance, cigarette burns, etc
- Use of flushvalve by others: requires a waterflow between 0.48 and 0.52 gal/sec
- Color pan: polar white
- Color seat: polar white or dark grey

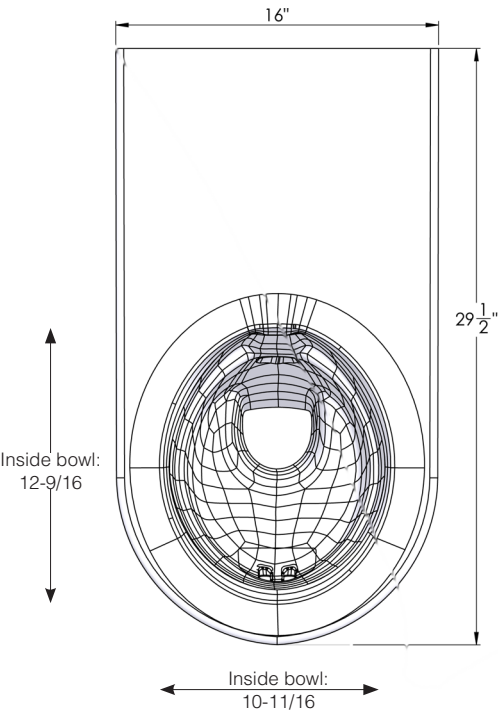


WARNING: Cancer and Reproductive Harm
www.P65Warnings.ca.gov

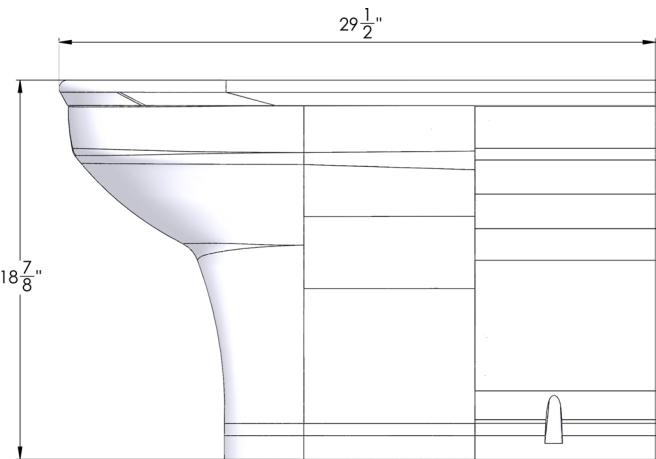
Front View



Top View



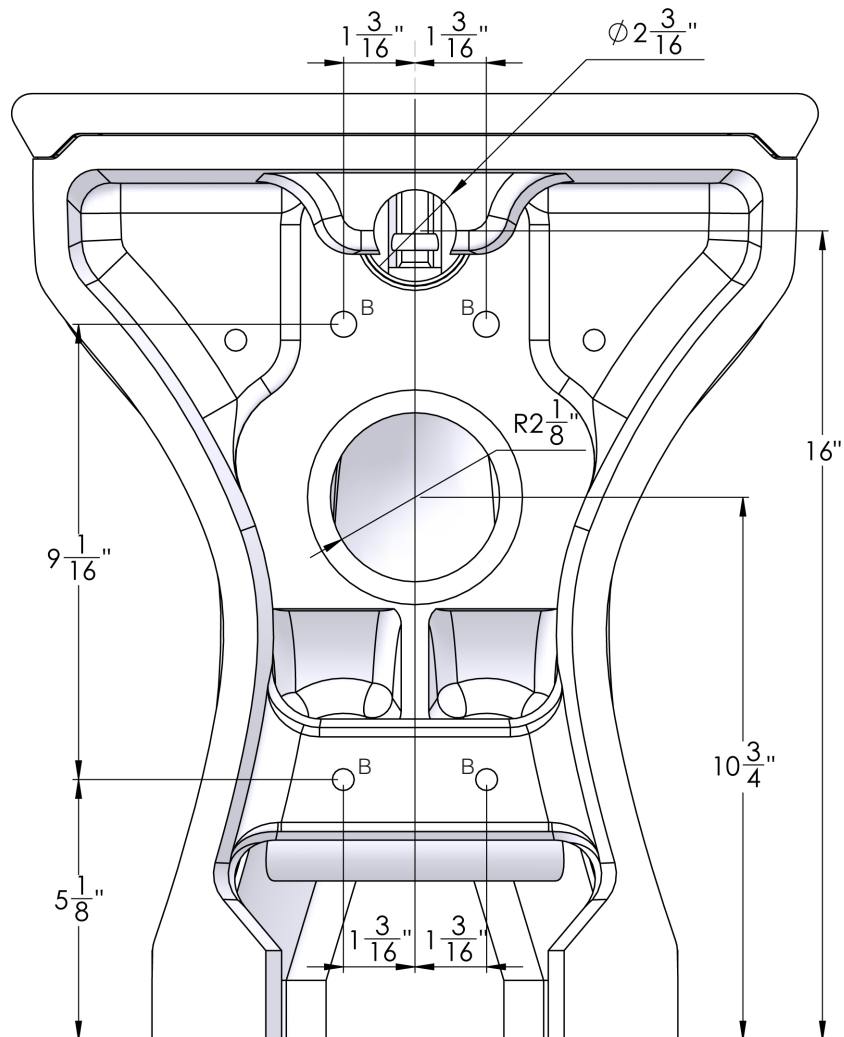
Side View



Cross Section



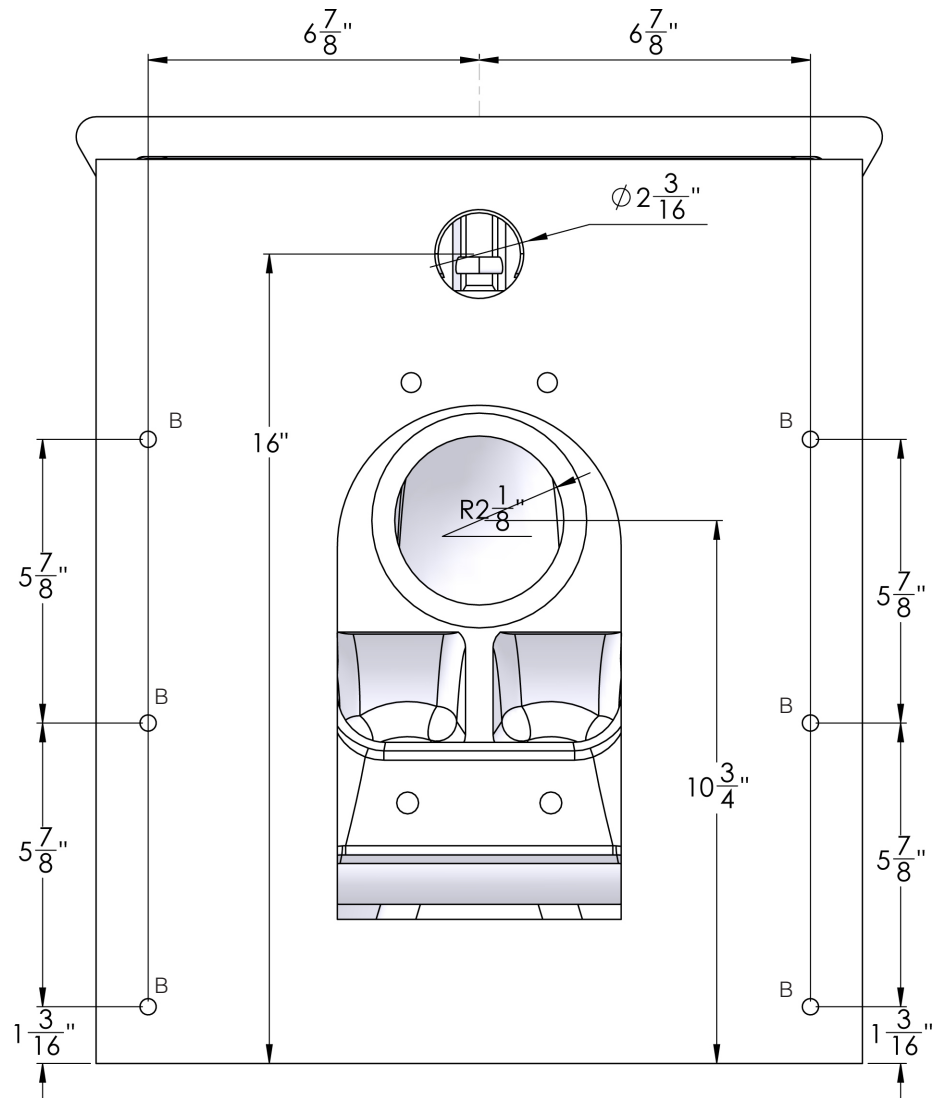
Rough-In Dimensions



RECOMMENDED HOLE SIZES IN WALL:

(B) toilet anchoring holes. Ø4/8" (4 off)

Rough-In Dimensions Front Fixing Plate



RECOMMENDED HOLE SIZES IN WALL:

(B) toilet anchoring holes. $\phi 1/4''$ (6 off)



Use tamper resistant screws to anchor front fixing plate to the wall



Use strong enough backing so the screws have a pull out strength of 1000 lbs

001	Base Model Number (must specify)	
<input type="checkbox"/>	CWC156-AST	Behavioral Healthcare Toilet
002	Color Fixed Seat (must specify)	
<input type="checkbox"/>	-G	Dark Grey
<input type="checkbox"/>	-W	Polar White
003	Color Bowl	
<input checked="" type="checkbox"/>		Polar White
004	Installation Option	
<input type="checkbox"/>	-FF	Front Fixing Plate
<input type="checkbox"/>	-AP	Top Access Panel
005	Flushing Options	
<input type="checkbox"/>	DFKIT03-PDS	Flush Valve, Airbreak, Piezo Activation, Double Flush, No Control Box
<input type="checkbox"/>	DFKIT03-PSS-WDC	Flush Valve, Airbreak, Piezo Activation, Single Flush, Single Control Box
<input type="checkbox"/>	DFKIT03-PSS	Flush Valve, Airbreak, Piezo Activation, Single Flush, No Control Box
<input type="checkbox"/>	CFKIT01-12	Concealed Flush Valve, Pneumatic Activation, 12" Length Flush Pipe
006	Water Control System	
<input type="checkbox"/>	WDCA100	Electronic Water Control (4 valves, 1 room)
<input type="checkbox"/>	WDCA200	Electronic Water Control (8 valves, 2 rooms)
006	Waste Pipe Connections (must specify)	
<input type="checkbox"/>	WCCONA	Step down waste pipe for wall waste 5-1/2" center off floor - Ø 4"
<input type="checkbox"/>	WCCONB	Step down waste pipe for wall waste 7-1/2" center off floor - Ø 4"
<input type="checkbox"/>	U900610	Straight rigid long waste connector - Ø 4" - 12" length
<input type="checkbox"/>	U900630	Straight rigid short waste connector - 4" diameter - 6-5/8" length
<input type="checkbox"/>	U900640	Offset rigid 2"/3" waste connector - Ø 4" - 7-3/4" length
<input type="checkbox"/>	U900600	90° rigid waste connector - Ø 4" - 12" length
<input type="checkbox"/>	U900620	Adjustable trapway adapter - Ø 4" - 22-1/2" overall length

In the absence of a legal or industry definition of anti-ligature or ligature resistant products, when we use these terms, we are referring to products that are designed and manufactured with the intention of reducing the risk of ligature attachment to the product(s). Wallgate and PSD LLC will always endeavour to design and test our anti-ligature product(s) to reduce the risk of product ligature attachment that may result in serious injury or death. Whilst all reasonable measures are taken at the time of design, the anti-ligature design of the products are not intended to and will not:

- a. Replace protective measures that need to be taken in the specific circumstances of usage;
b. Substitute the need for supervision of those who may be at risk;

- c. Protect and or prevent those at risk against any self-harm instances that may occur when installed; and
d. Protect and or prevent injury when the risks where unknown to us at the time of the design of the product(s).

PSD LLC does not offer and does not represent or warrant that any product(s) for sale that are ligature-free. Therefore, PSD LLC will not be liable for any claims, loss, or damages arising from ligature attachment on our products. It is the purchaser's responsibility to ensure that products purchased and installed are suitable for the environments in which they are installed, and suitable supervision and protective measures are in place to protect those at risk. Whilst all reasonable care has been taken in compiling the information in this document, the designs, dimensions and products shown are indicative only and should not be relied upon without our prior approval. Due to our policy of continuous development, we reserve the right to alter any details of specifications or products without notice. All information, drawings, technical specifications and product designs remains the property of PSD LLC.