







# Hand Wash Station

# LAV9C1800

## Three User Stainless Lavatory

 <p><b>Dimensions</b></p> <p>70<sup>7/8"</sup> x 19<sup>5/8"</sup> x 7<sup>7/8"</sup></p>	 <p><b>Technical</b></p> <p>3 x 1<sup>1/4"</sup> Tail Piece</p>	 <p><b>Materials</b></p> <p>AISI 304 Stainless Steel</p>	 <p><b>Not Compliant</b></p>
--	--	---	---

### Material and Construction

The LAV9C1800 is made from AISI304, 18 gauge stainless steel. The stainless steel is finished to a brushed finish.

The handwash station has halfround bowls with a 15 1/4" diameter. The bowls are 4-3/4" deep. The wash station has a 2" backsplash and the front of the unit is rounded.

The unit is mounted on a bracket and is further anchored to the wall and supported with stainless steel brackets that are integral to the unit.

The unit comes standard with a straight brass 1 1/4" tail piece without overflow.

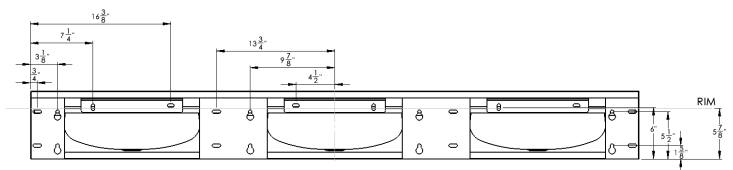
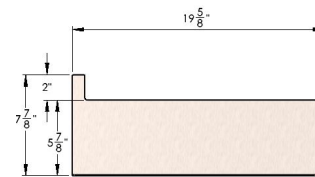
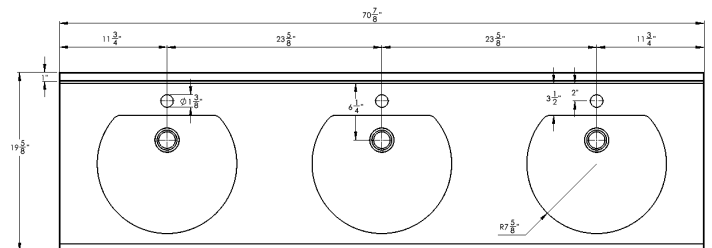
### Activation & water distribution

The LV9C1800 can be supplied with any of AquaDesign's faucets. As an alternate theLAV9C1800can also be punched for center set, 4" center or 8" center faucets by others.

### Application



The lavatory is intended for handwashing only. It is not to be used to dispense water for human consumption either by drinking or use in the preparation of food or beverages.



<b>001 Base Model Number (must specify)</b>	
<input type="checkbox"/> LAV9C1800	Three User Lavatory
<b>002 Faucets</b>	
<input type="checkbox"/> -	No Faucets
<input type="checkbox"/> -L12	Line 12 Sensor Faucets
<input type="checkbox"/> -L13	Line 13 Sensor Faucets
<input type="checkbox"/> -L14	Line 14 Sensor Faucets
<input type="checkbox"/> -OMW	Omnia Water Only Faucets
<input type="checkbox"/> -OML	Omnia Water and Soap Faucets
<input type="checkbox"/> -L70	Line 70 Pushbutton Faucets
<b>003 Soap Dispenser</b>	
<input type="checkbox"/> -SD12	Line 12 Soap Dispensers (2x)
<b>004 Hole Punching</b>	
<input type="checkbox"/> -4C	Punched for 4" Center Faucets
<input type="checkbox"/> -8C	Punched for 8" Center Faucets



**WARNING:** Cancer and Reproductive Harm  
[www.P65Warnings.ca.gov](http://www.P65Warnings.ca.gov)