

Modus

MOD20

Modular Lavatory System

Dimensions	Water Use	Certifications	Technical	Barrier Free
With Skirt: 20" x 22 ¹ / ₈ " x 15 ³ / ₈ " Without Skirt: 20" x 22 ¹ / ₈ " x 8 ³ / ₄ "	0.35 gpm/ 0.5 gpm	 IAPMO Z124-2011 CSA B45.5-11 IAPMO IGC156 ASME A112.18.2-2011 CSA B125.2-11	Drain: 1 1/2" Supplies: 1/2" IPS Inlet Pressure: 20-100 psi	ADA TAS Alberta Building Code Ontario Barrier Free BC Building Code Code Construction Québec

Material & Construction

The bowl is made from anti-microbial solid surface. AquaDesign's solid surface is a composite material of acrylic polyester polymer resins and aluminum trihydrate fillers. The material is resistant to stains and burns and complies with ANSI Z124.3. Solidsurface cleans easily with Scotchbrite®, household cleaners or fine grit sandpaper. The Modus lavatory is available in 15 colors.

The Modus includes a heavy gauge stainless steel hidden support bracket.

The Modus is supplied with integral drain and a stainless steel drain pan.

Anti-microbial

The Modus bowl and shelves are manufactured with an anti-microbial agent. The agent is present both on the surface and on the inside of the material and will not dissipate or scratch off. In contact with moisture, anti-microbial ions will be released and effectively kill bacteria.

Standard Equipment

A-model: Lavatory in anti-bacterial solid surface material, stainless steel mounting bracket, stainless drainpan with tail piece.

B-model: Lavatory in anti-bacterial solid surface material, stainless steel mounting bracket, stainless drainpan with tail piece, stainless steel skirt and bottom plate.

Optional Equipment

The Modus can be supplied with any of AquaDesign's sensor faucets or soap dispensers or can be drilled for faucets by others.

Configurations

The Modus can be supplied with custom length side shelves. The length of the shelves can vary between 5" and 30". The shelves can be used to connect to other Modus fixtures or to connect to the wall.

The Modus can also be installed with the optional Modus baby changer unit.

LEED Compliance

When supplied with AquaDesign's faucets, The Modus contributes to meeting LEED requirements in the following categories:

- WEp1 - Water Efficiency
- WEC3 - Water Use Reduction

The nozzles have a flow rate of 0.35 gpm.

Application

The Modus is not to be used to dispense water for human consumption either by drinking or use in the preparation of food or beverages.



Warranty

5 years limited warranty on material, 1 year limited warranty on AquaDesign faucets.

SAMPLE SPECIFICATION

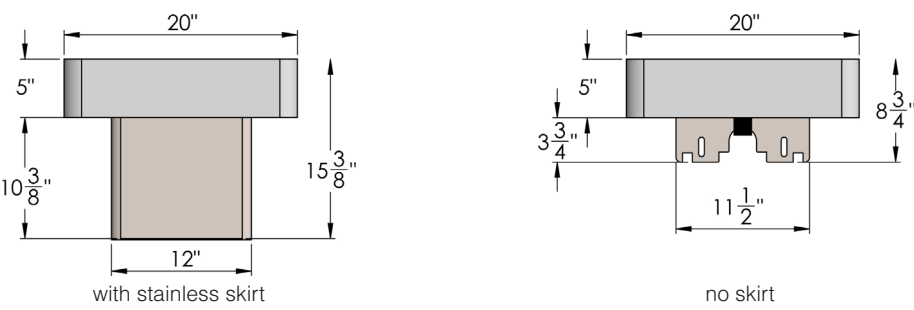
Fixture shall be an AquaDesign Modus hand wash station. Bowl is made from anti-microbial solid surface. The unit will have an integral seamless drain.

The unit is furnished with a Line12/Line13/Line14/Line70/Omnia faucet.

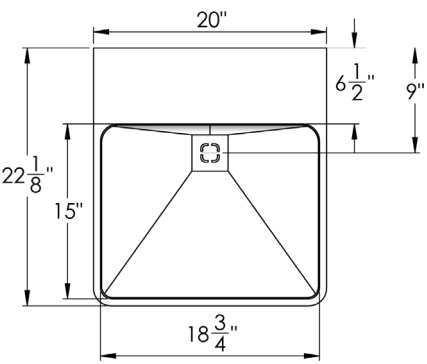


WARNING: Cancer and Reproductive Harm
www.P65Warnings.ca.gov

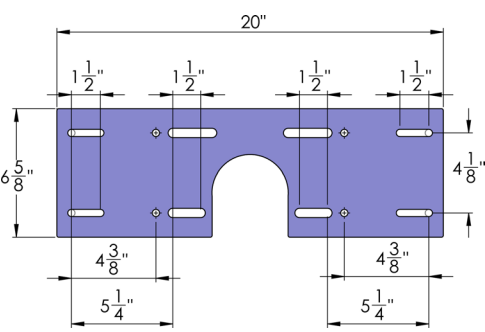
Front View



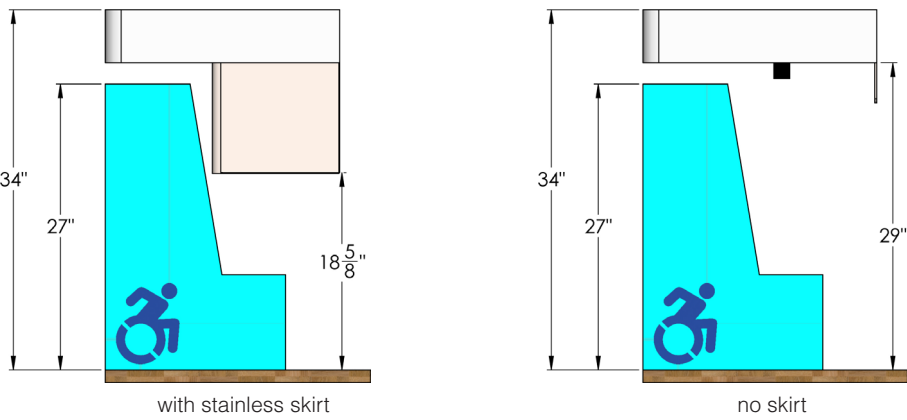
Top View



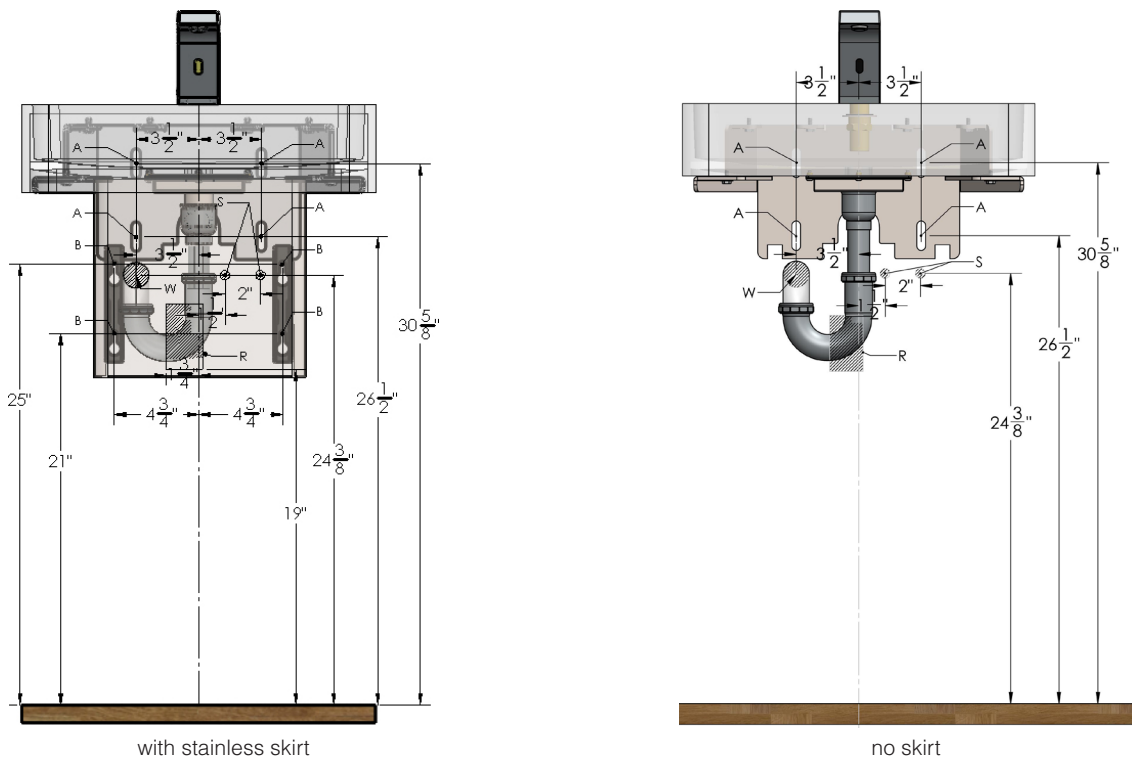
Carrier Plate



Side View Standard Height



Rough-In Dimensions



Code	Description
A	3/8" Anchors
B	1/4" Anchors
R	110V GFCI Outlet
W	1-1/2" NPT Drain
S	1/2" Supply (hot and cold

- Notes:**
1. Electrical receptacle must be wired to a GFCI protected circuit. Fixture must be earth grounded.
 2. Consult local electrical code for need and use of extra electrical conduit box.
 3. All height measurements are measured from the FINISHED floor.

Height Adjustments

Standard	Rim Height	Adjustment of A, B & W
ADA & TAS Adult	34"	None
ADA Juvenile, Age 6-12	31"	Subtract 3" from height in drawing
TAS, Grades 6 through 8 or 9	32"	Subtract 2" from height in drawing
TAS, Grades Pre-K through Grades 5 or 6	30"	Subtract 4" from height in drawing
Alberta, Ontario and BC Building Code	865 mm	None
Code de Construction Québec	865 mm	Aucune

001	Base Model Number (must specify)	
<input type="checkbox"/>	MOD20	Modus Single User Lavatory
002	Skirt (must specify)	
<input type="checkbox"/>	-A	No Skirt
<input type="checkbox"/>	-B	Stainless Steel Skirt
003	Operation (must specify)	
<input type="checkbox"/>	-L12	Line 12 Sensor Faucet
<input type="checkbox"/>	-L13	Line 13 Sensor Faucet
<input type="checkbox"/>	-L14	Line 14 Sensor Faucet
<input type="checkbox"/>	-OMW	Omnia Sensor Faucet
<input type="checkbox"/>	-OML	Omnia Water & Soap Sensor Faucet
<input type="checkbox"/>	-L70	Line 70 Pushbutton Faucet
<input type="checkbox"/>	-DEK	No Faucet
004	Supply (must specify)	
<input type="checkbox"/>	-TEM	Tempered or Cold Water
<input type="checkbox"/>	-TMV	Thermostatic Mixing Valve
005	Color (must specify)	
<u>Standard Colors</u>		
<input type="checkbox"/>	-AB	Adobe Brown
<input type="checkbox"/>	-AW	Ash White
<input type="checkbox"/>	-BF	Black Forrest
<input type="checkbox"/>	-CO	Concrete Grey
<input type="checkbox"/>	-ES	Egyptian Sand
<input type="checkbox"/>	-MB	Midnight Blue
<input type="checkbox"/>	-MG	Misty Grey
<input type="checkbox"/>	-PB	Pearl Black
<input type="checkbox"/>	-PW	Polar White
<input type="checkbox"/>	-SA	Sandstone
<input type="checkbox"/>	-TG	Twilight Grey
<u>Designer Colors</u>		
<input type="checkbox"/>	-BB	Belgian Blue
<input type="checkbox"/>	-MQ	Montreal Quartz
<input type="checkbox"/>	-PS	Paris Stone
<input type="checkbox"/>	-SR	Sydney Rock Oyster
006	Soap (for -A models only)	
<input type="checkbox"/>	-SD12	Line 12 Soap Dispenser
007	Other Options	
<input type="checkbox"/>	-CP	Carrier Plate for Mounting
<input type="checkbox"/>	-SR	Fixture modified for shelf or baby changer on right hand side
<input type="checkbox"/>	-SL	Fixture modified for shelf or baby changer on left hand side
<input type="checkbox"/>	-CS	Drilling for center set faucet by others
<input type="checkbox"/>	-4C	Drilling for 4" center faucet by others
<input type="checkbox"/>	-8C	Drilling for 8" center faucet by others

Approved by:

Name: _____

Title: _____

Signature: _____

Date: _____