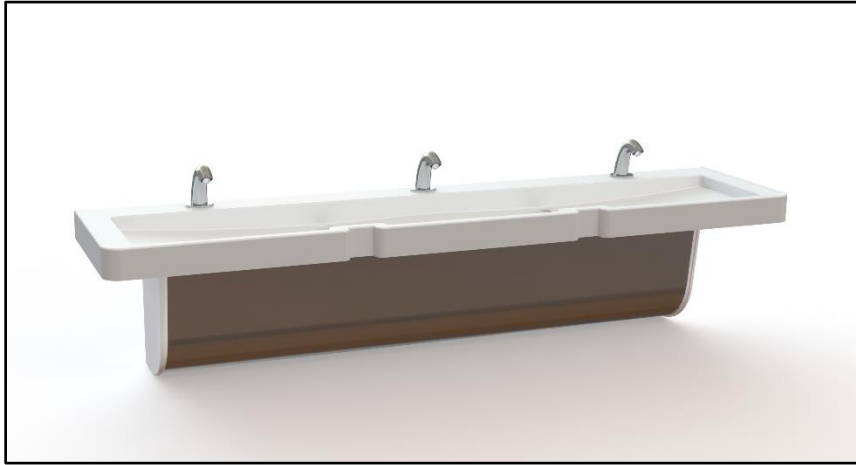


Installation



Installation Instructions for models:

SL03-B

SL03-B-SEN

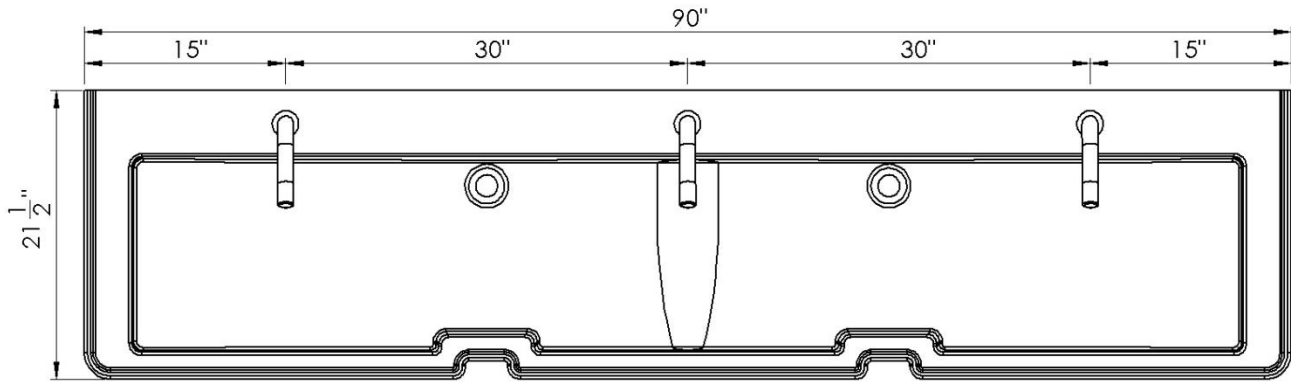
IMPORTANT

- Read instructions entirely prior to installation.
- Prior to hooking up the fixture to the water supply make sure that all the lines are flushed thoroughly.
- All wall anchors should have a pull out strength of 1000 lbs or more.
- Units should always be installed according to local plumbing and/or electrical codes.

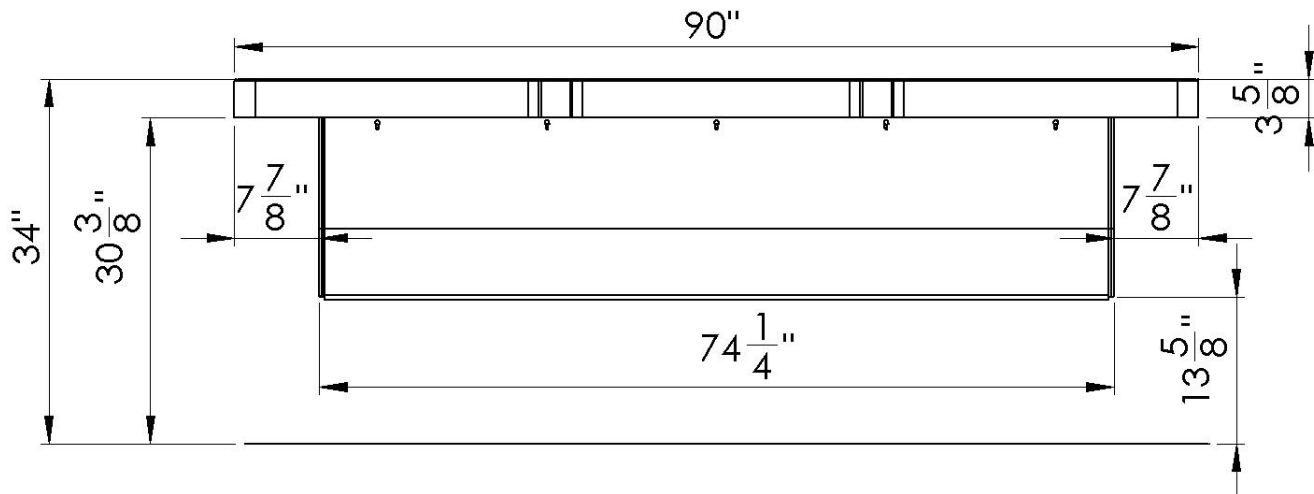
Installation

Dimensions

Top View

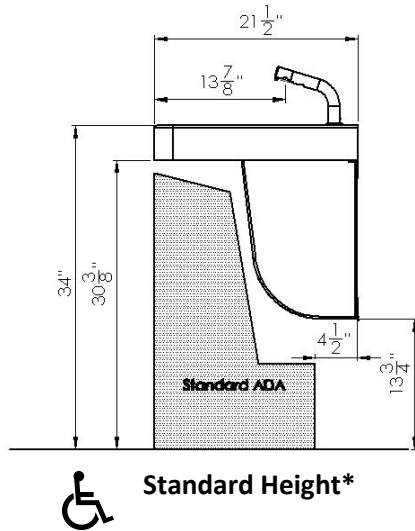


Front View

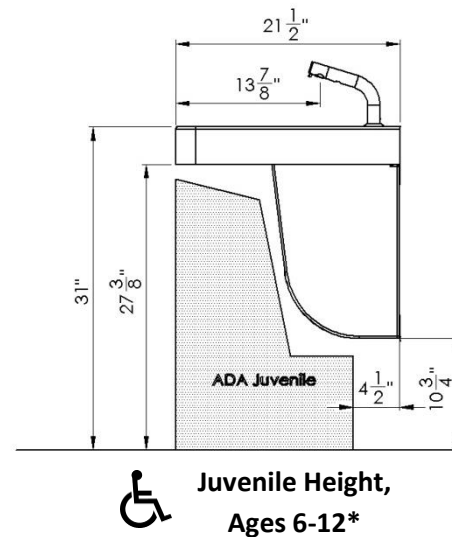


Installation

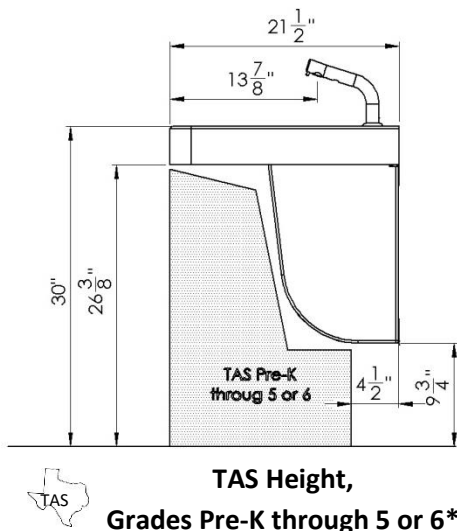
Mounting Heights



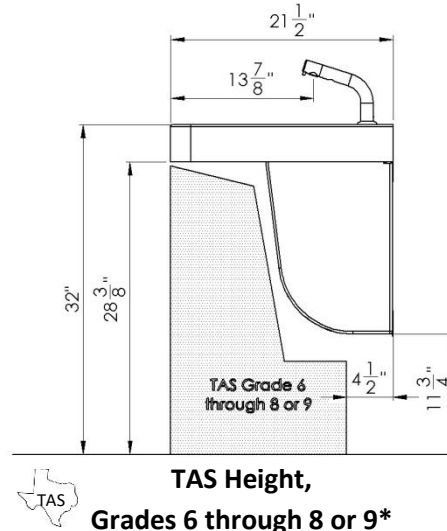
Standard Height*



**Juvenile Height,
Ages 6-12***



**TAS Height,
Grades Pre-K through 5 or 6***

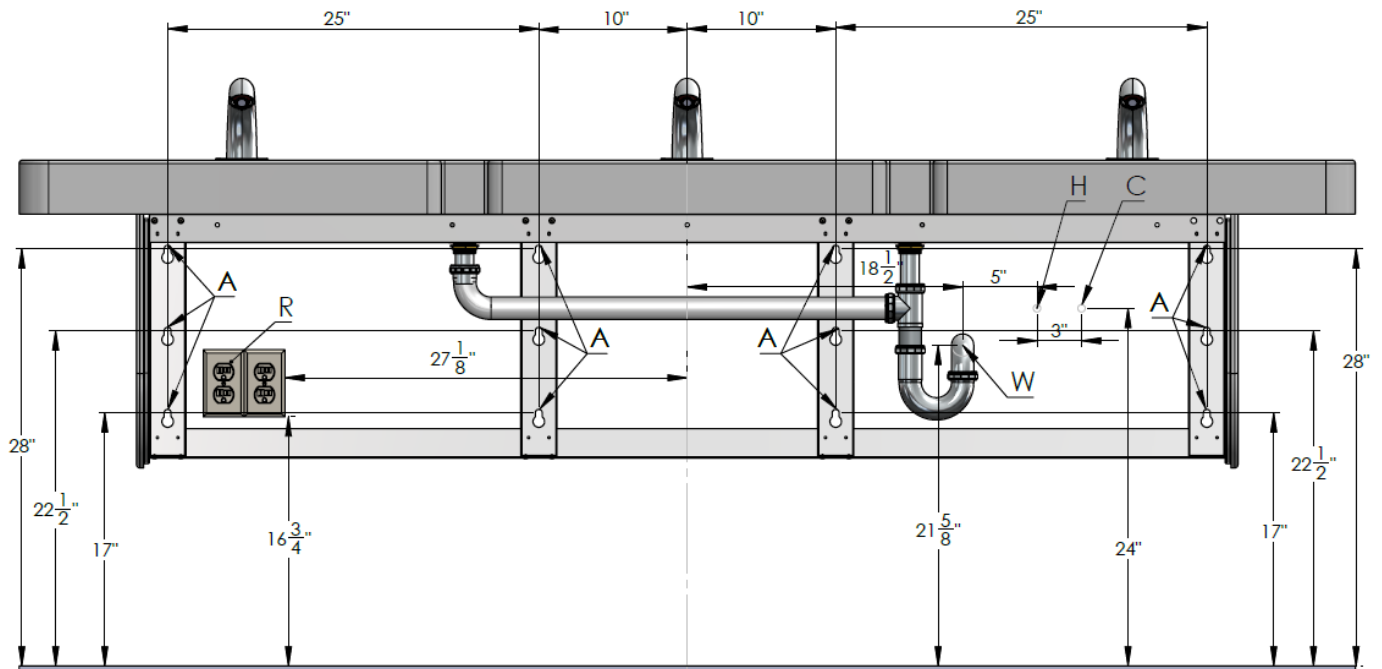


**TAS Height,
Grades 6 through 8 or 9***

*: Washfountain is shown with Intersan's Standard Santronic® faucet. Dimensions for reach might differ if other faucet is used.

Installation

Rough-in Dimensions - Faucets



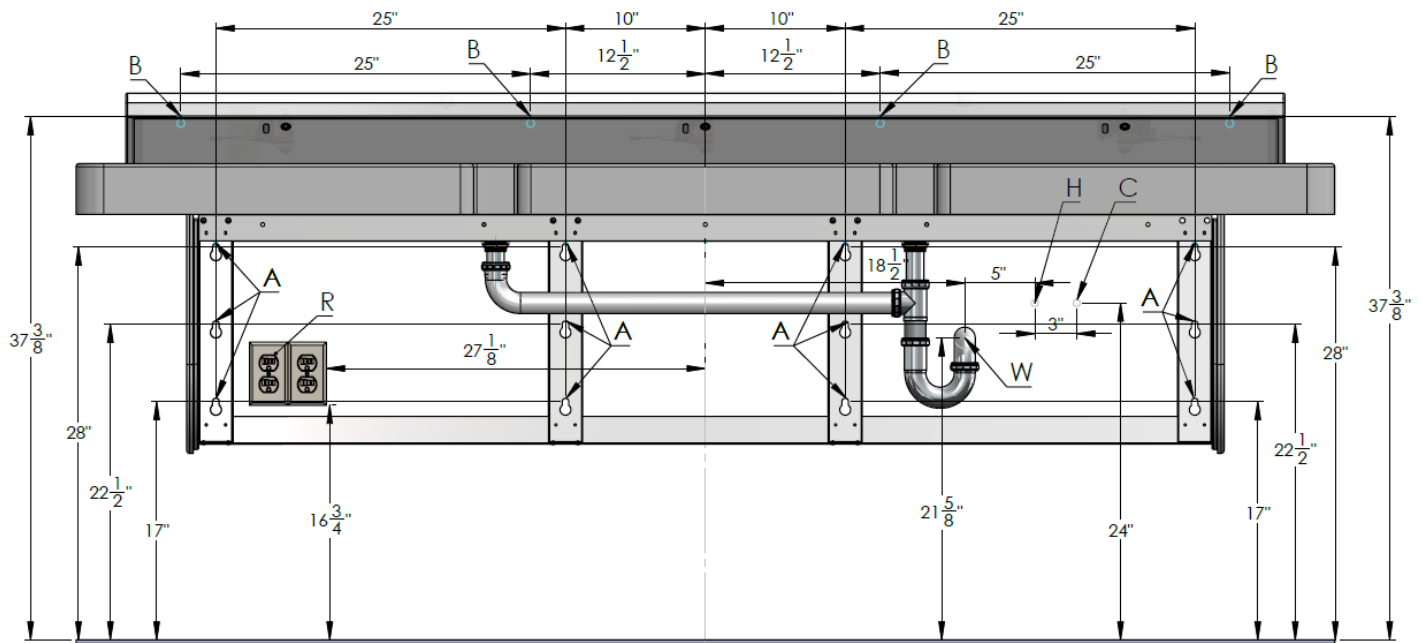
Code	Description
A	3/8" Anchors
C	Cold Water Supply 1/2" NPT
H	Hot Water Supply 1/2" NPT
R	110v GFCI Outlet (Number of outlets depends on number of faucets installed)
W	1 1/2" Drain

Height Adjustments

Standard	Rim Height	Adjustment of height for A, B, C, H, R & W
ADA & TAS Adult	34"	None
ADA Juvenile, Ages 6 - 12	31"	Subtract 3" from height in drawing
TAS, Grades 6 through 8 or 9	32"	Subtract 2" from height in drawing
TAS, Pre-K through Grades 5 or 6	30"	Subtract 4" from height in drawing

Installation

Rough-in Dimensions – Water Distribution Head



Code	Description
A	3/8" Anchors
B	1/4" Anchors
C	Cold Water Supply 1/2" NPT
H	Hot Water Supply 1/2" NPT
R	110v GFCI Outlet (Number of outlets depends on number of faucets installed)
W	1 1/2" Drain

Height Adjustments

Standard	Rim Height	Adjustment of height for A, B, C, H, R & W
ADA & TAS Adult	34"	None
ADA Juvenile, Ages 6 - 12	31"	Subtract 3" from height in drawing
TAS, Grades 6 through 8 or 9	32"	Subtract 2" from height in drawing
TAS, Pre-K through Grades 5 or 6	30"	Subtract 4" from height in drawing

Installation

Step 1: Rough-in

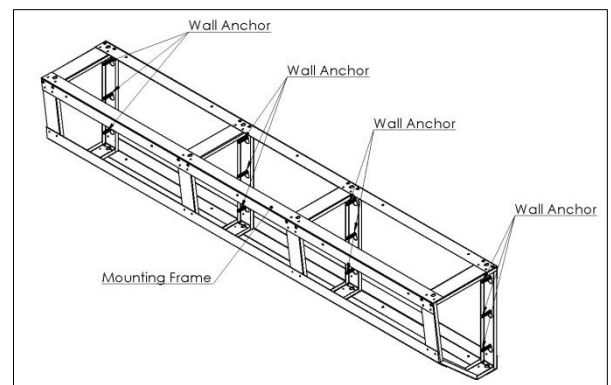
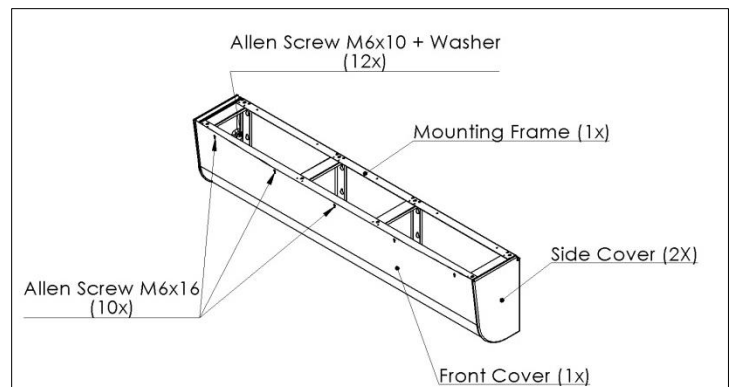
- When installing the fixture at non-standard height make sure to adjust the dimensions for height as shown on the table on page 4.
- Rough in the ½" copper supply tubing through the wall at the locations marked with **H** and **C** on the rough-in drawing on page 4.
- Rough in the 1 ½" drain connection through the wall at the location marked with **W** on the drawing on page 4.
- When using faucets: with plug-in transformer(s): rough in the GFCI electrical outlet at the location marked with **R** on the drawing on page 4.
- When using a tankless water heater: rough in the electrical supply for the heater on the location shown on the drawing on page 4.
- Install twelve 3/8" anchors on the locations marked with **A** on the drawing on page 4. The anchors should have a pull-out strength of 1000 lbs.
- Install six 3/8" anchors on the locations marked with **B** on the drawing on page 4. The anchors should have a pull-out strength of 1000 lbs.

Step 2: Installing the mounting frame

- Remove the front panel from the mounting frame by removing the ten allen screws.
- Remove two side panels by removing the twelve allen screws and washers.
- Ensure that the wall where the washfountain is to be installed is flat.

Installing the fixture on a wall that's not flat may cause the frame to bend and make further installation of the unit impossible.

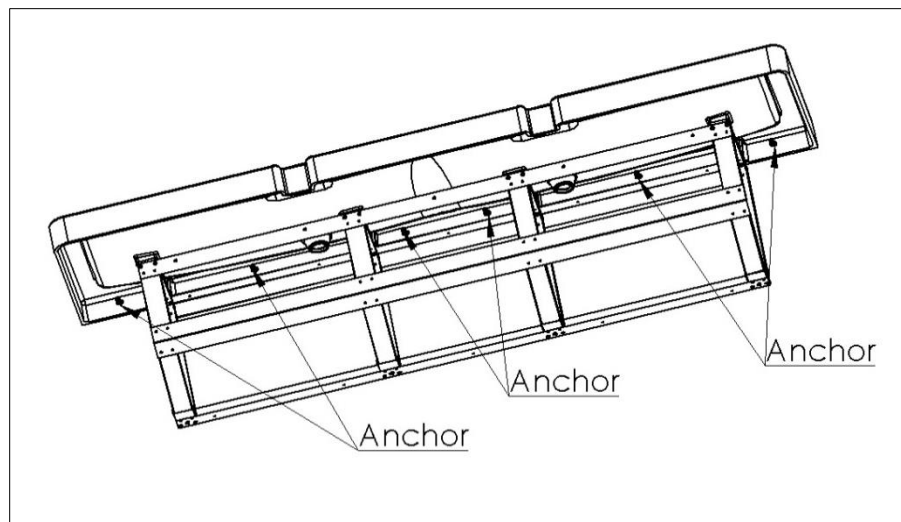
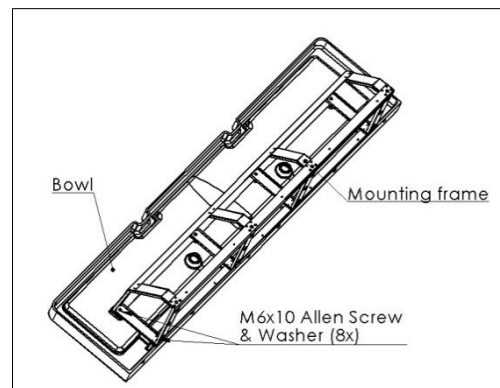
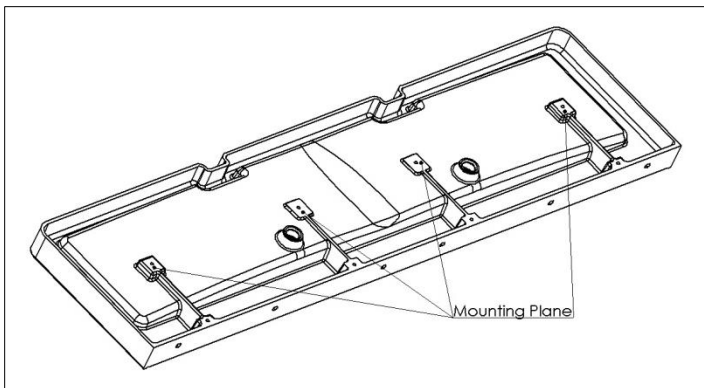
- Mount the frame to the anchors. Use 3/8" anchors and appropriate washers.



Installation

Step 3: Installing the bowl

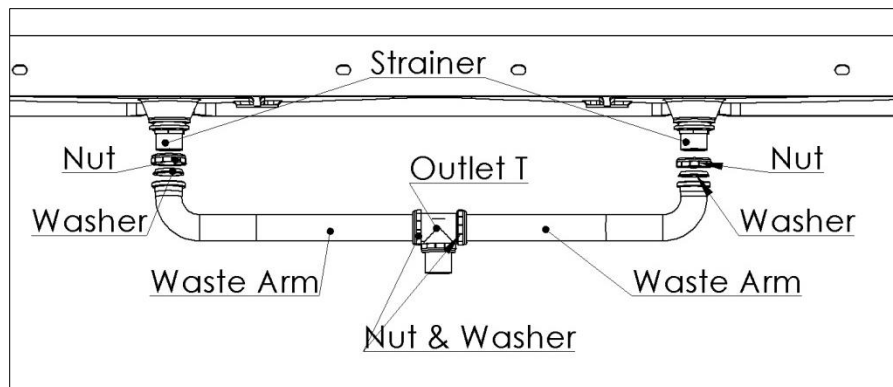
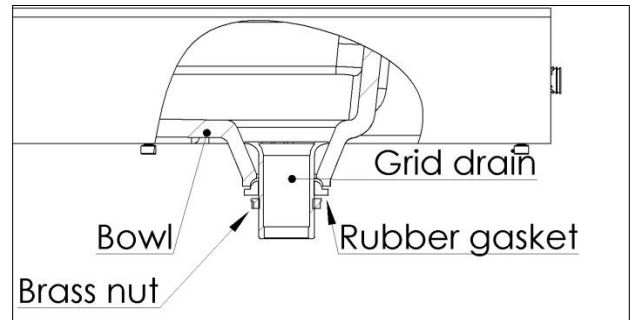
- Use proper lifting technique to lift the bowl. Always lift and position the bowl with at least two people. Failure to do so might result in injury and/or damage to the bowl.
- Lift the bowl on the pedestal. Make sure that the mounting planes of the bowl sit square on the frame. Align the holes on the mounting planes with the holes in the mounting frame.
- At the same time align the bowl with the anchors in the wall and slide the bowl over the anchors
- Attach the bowl to the frame by using eight M6x10 allen screws and washers provided. Do not tighten the screws all the way yet.
- Attach the bowl to the wall with the anchors already installed. Use 3/8" anchors and appropriate washers. **Do not over tighten.** Over tightening might cause the bowl to crack



Installation

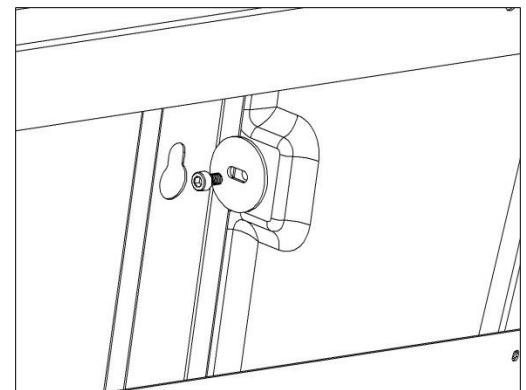
Step 4: Installing drain assembly

- Position the grid drain in the drain hole.
- Put the rubber gasket and the brass nut over the grid drain on the underside of the bowl.
- Tighten the brass nut firmly so no water can pass between the grid drain and the bowl. If necessary use plumber's putty.
- Assemble the drain assembly according to the drawing. Make sure to use the washers and tighten the nuts properly. Cut the waste arms to length (approx. 14" depending on the location of the drain stub).
- Assemble the p-trap by connecting it to both the outlet T and the 1 ½" drain stub in the wall.



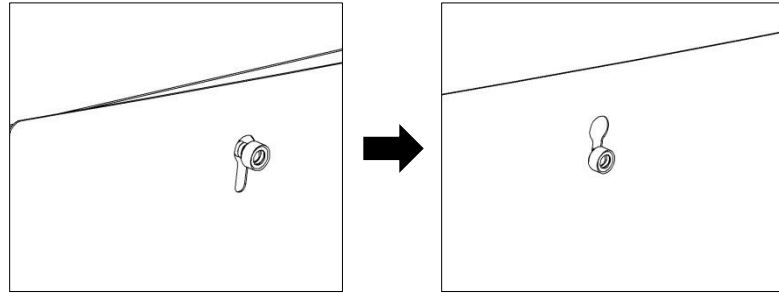
Step 5: Finish the installation

- Test the faucets and ensure that the drain doesn't leak before finishing the installation.
- Tighten the screws between the bowl and the mounting frame.
- Reinstall the side panels. Hold the panel in place on the mounting frame and install the allen screws and special washers. The mounting frame should be between the special washer and the side panel.
- Reinstall the front panel by screwing in the 10 allen screws.
 - Screw the top five screws halfway in the frame



Installation

- Hook the panel over these top screws & hold the panel up..
- Install the five screws at the bottom of the front access panel.
- Tighten the top five screws.



Maintenance

Solidsan® bowl and side panels

Solidsan® is a solid surface material made of acrylic modified polyester resins, aluminum trihydrate fillers and color granules. This synthetic compound material has an elegant granite-like appearance. Solidsan® is not only virtually indestructible and easy to maintain, but equally matches perfectly from an aesthetic viewpoint, this resulting in a remarkable design with soft, rounded shapes, ideal for the public washroom.

- Daily care: wipe the surface with soapy water or a damp cloth.
- Surface staining: clean the surface with soapy water or ammonia based cleansers.
- Stubborn stains and superficial scratches: clean the surface with an abrasive cleanser and a wet sponge. You can also use a green Scotch Brite® pad.
- Stubborn scratches: sand with 400 grit sandpaper and then clean with an abrasive cleanser and a green Scotch Brite® pad.
- AVOID contact with harsh chemicals such as drain cleansers and paint removers.
- AVOID contact with hot pots or heat producing appliances.

Stainless steel panels

Things to Avoid

- Avoid scouring a Stainless steel surface across the satin finish lines. Scouring across the satin finish lines can damage the original Stainless steel grain finish. Never use an abrasive scouring pad.
- Don't allow liquid soap or other household cleansers to dry on the Stainless steel surface. Most brands contain chemical additives, which will affect the finish.
- Never leave solutions of chlorine bleach and water on your Stainless steel surface for extended periods of time. Chlorides, which are found in most soaps, detergents, bleaches, and cleansers, are very aggressive to stainless steel. If left on too long they can cause surface pitting.
- Don't use a steel wool pad to clean your Stainless steel. Steel wool pads have a tendency to break apart and small particles of steel can become embedded in the surface of the sink. The steel particles will rust and will give the appearance that the Stainless steel itself is rusting.
- Never leave wet sponges, cloths, or cleaning pads on the Stainless steel surface. This can lead to surface rust.

Things to Do

- Rinse or clean surface after use. Clean with warm, soapy water.
- Avoid caustic chemicals. Avoid exposing your appliance to strong chemicals, such as paint removers, oven cleaners, etc. If contact occurs, quickly flush the surface with water.

Installation

- Follow the grain. When cleaning the Stainless steel surface of your sink, be sure to rub in the direction of the grain finish lines.

Parts

