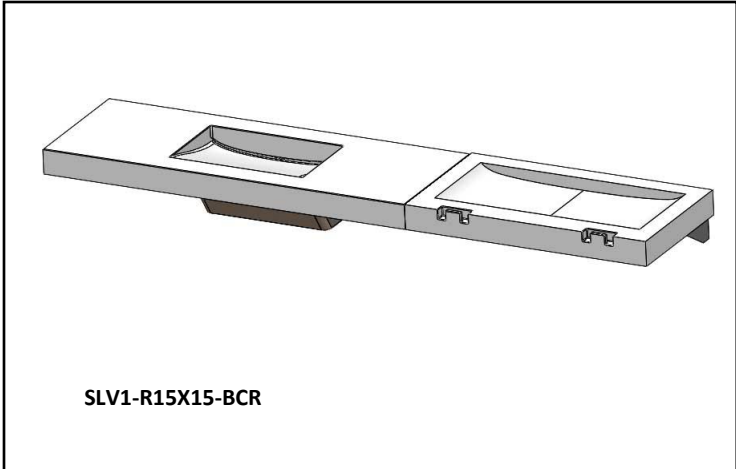


- Made from anti-bacterial Solidsan
- ADA-compliant & TAS Compliant

-BSL/-BSR – option
TECHNICAL INFORMATION



Material & Construction

The baby changing table is made from anti-microbial Solidsan. Solidsan is a composite material of acrylic polyester polymer resins and aluminum trihydrate fillers. The material is resistant to stains and burns and complies with ANSI Z124.3. Solidsan cleans easily with Scotchbrite®, household cleaners or fine grit sandpaper. Solidsan® is available in 16 colors.

The Streamlav View includes heavy gauge stainless steel support brackets.

Anti-microbial

The Solidsan baby changing station is manufactured with an anti-microbial agent. The agent is present both on the surface and on the inside of the material and will not dissipate or scratch off. In contact with moisture, anti-microbial ions will be released and effectively kill bacteria.



Standard Equipment:

Baby changing table in anti-bacterial solid surface material, steel mounting bracket, safety strap, two purse hooks and warning sticker.

Configurations

The baby changing table option can be attached to any Streamlav View lavatory system. The baby changing table can be attached on both the left or right side of the lavatory

Accessibility



Standard Height: The Solidwave High-Low baby changing table is designed to meet all ADA and TAS guidelines when the Solidwave High-Low is mounted at the standard rim height of 34" for the high station.

Warranty: 5 years limited warranty on material and 3 years limited warranty on components.

SAMPLE SPECIFICATION

Fixture shall include an integral baby changing table with safety strap. The baby changing table shall be 42" by 22" and include two integral hooks. The baby changing table shall be made of anti-microbial solid surface

Baby Changing Station Option (must add to Streamlav View model number)

- BCL Baby changing table - left
- BCR Baby changing table - right

Configurations

Single User



SLV1-BCR



SLV1-BCL

Two User



SLV2-BCR



SLV2-BCL

Three User



SLV3-BCR



SLV3-BCL

Four User

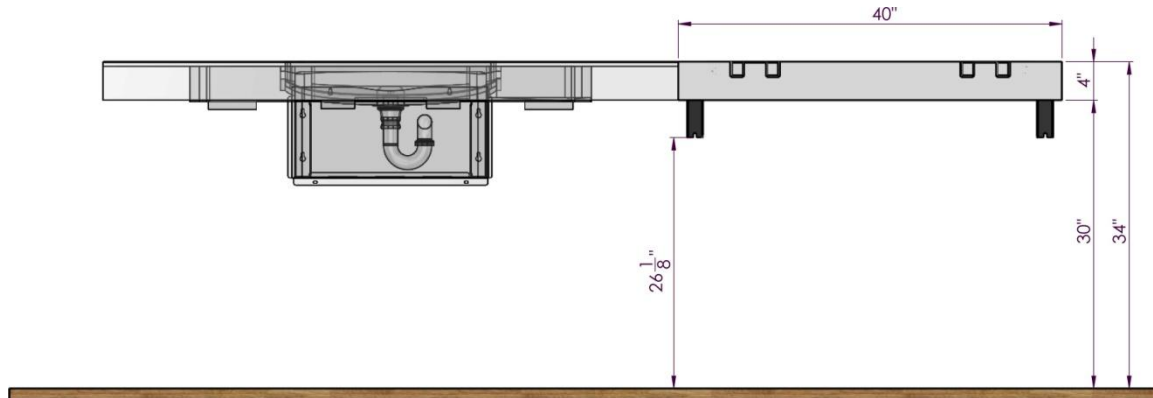


SLV4-BCR

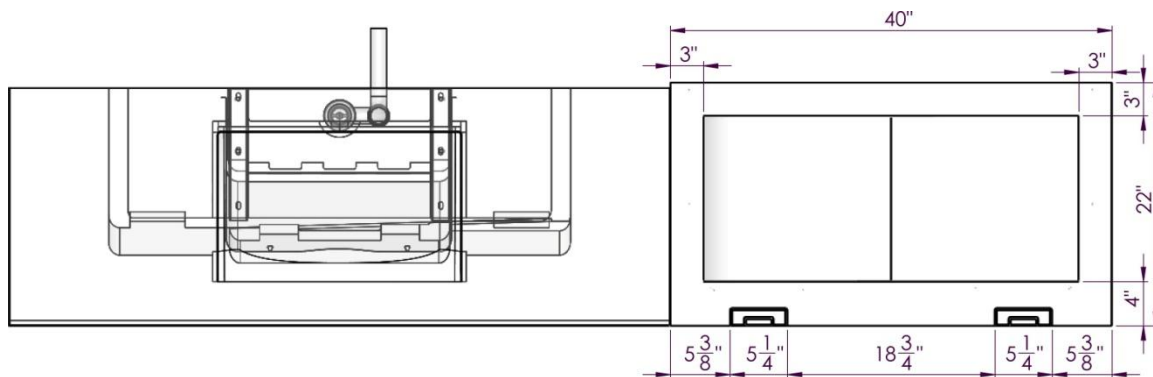


SLV4-BCL

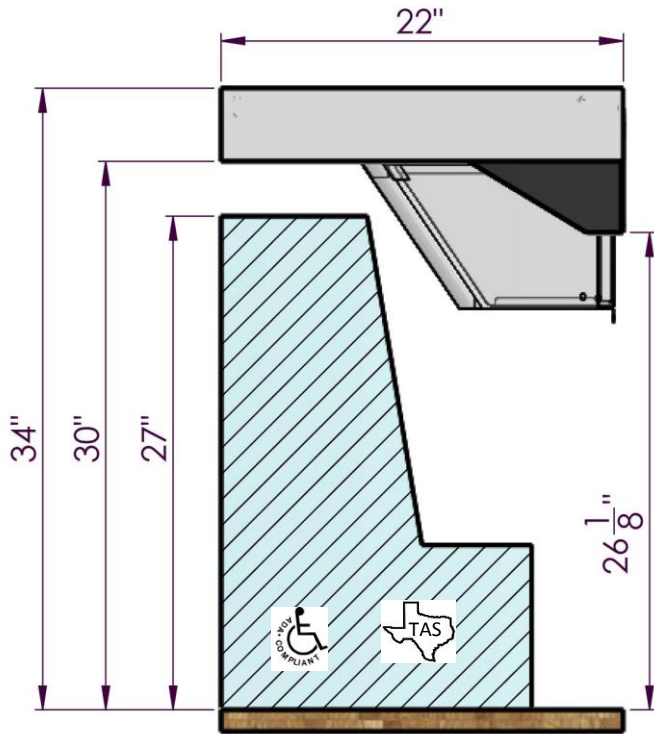
Front View



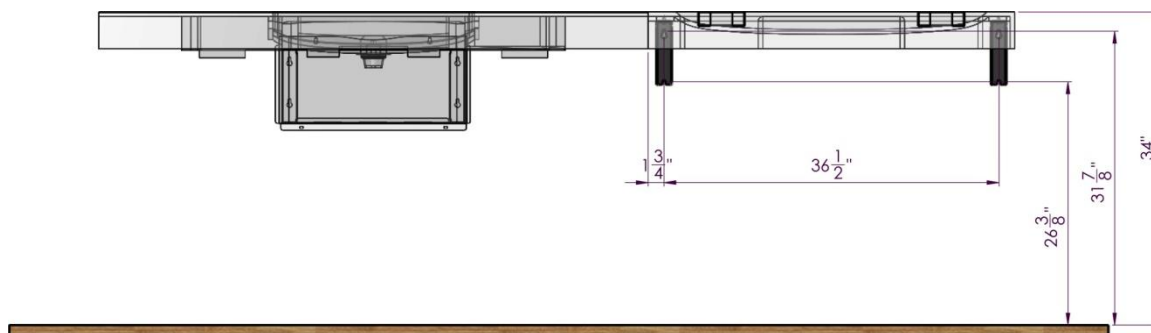
Top View



Side View (high handwash station at 34" rim height)



Rough-in Dimensions



Code	Description
A	1/4" Anchors for baby changer with a pull out strength of min. 1000 lbs.

Height Adjustments

Standard	Rim Height	Adjustment of height for A, B, C, H, R & W
ADA & TAS Adult	34"	None

WARNING: Be sure to use anchors with a pull out strength of 1000 lbs. Additional reinforced backing behind the wall might be required to properly mount the baby changing station and lavatory system.

WARNING: Every Solidwave High-Low with the baby changing station option is supplied with a warning sticker. It is very important that the sticker is placed right above the baby changing station. Failing to do so might result in serious injury.

 **WARNING**



WARNING Never leave child unattended.



WARNING Avoid serious injury from falling or sliding out. Always use restraint.



WARNING Designed for infants only. Age up to 3.5 years and weighing less than 50 lb. Keep one hand on the child at all times.

Intersan Manufacturing Company - www.intersanUS.com