

# Installation



## Installation Instructions for models:

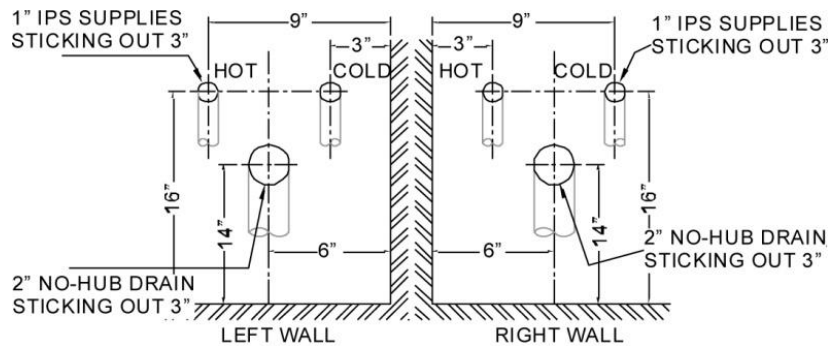
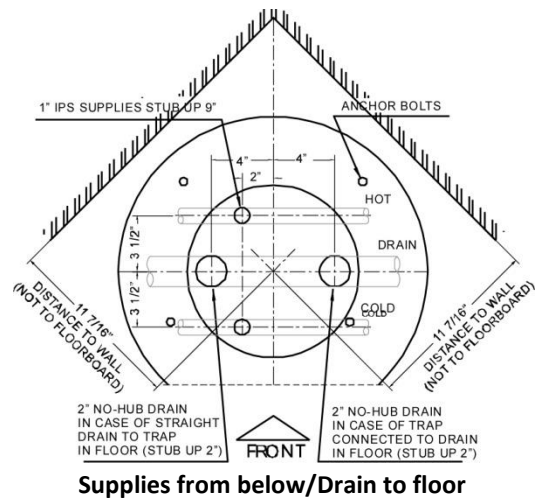
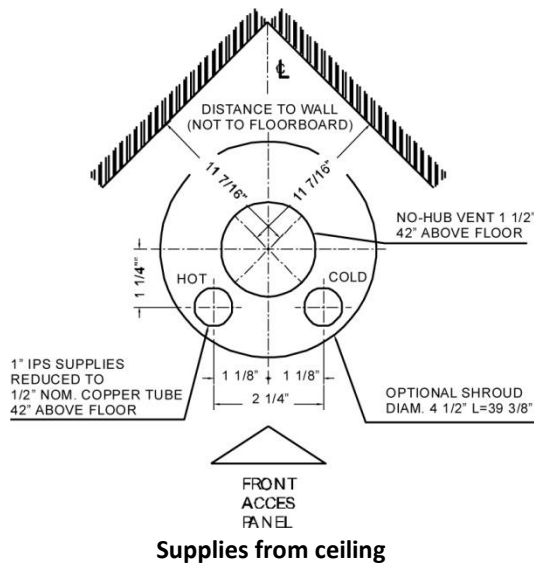
IH3	PZ3
IH4	PZ4
IH5	PZ5
IH6	PZ6
IH8	PZ8

## IMPORTANT

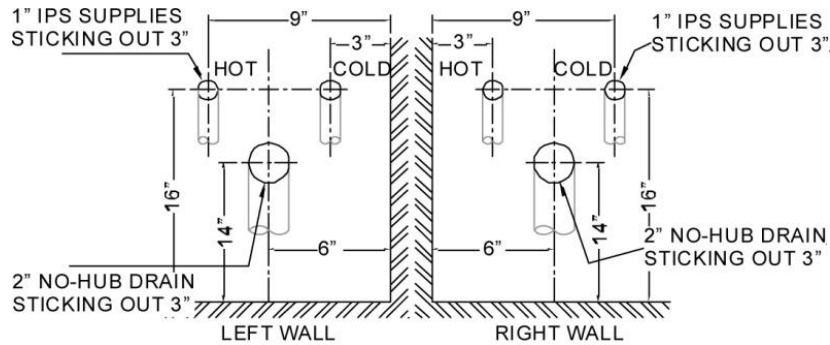
- Read instructions entirely prior to installation.
- Prior to hooking up the fixture to the water supply make sure that all the lines are flushed thoroughly.
- All wall anchors should have a pull out strength of 1000 lbs or more.
- Units should always be installed according to local plumbing and/or electrical codes.

# Installation

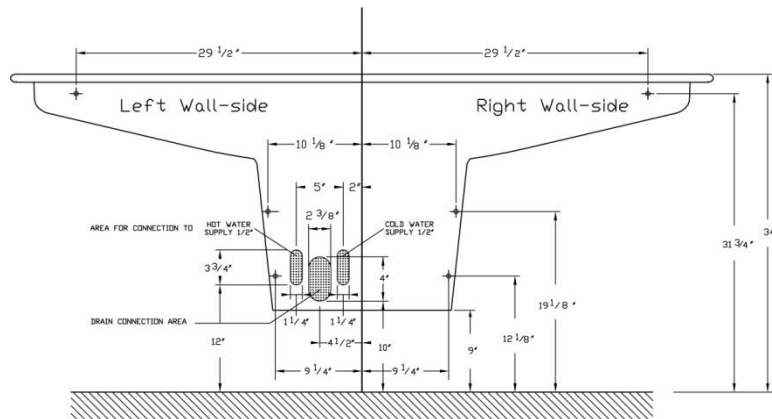
## Rough-in Dimensions Corner Units



# Installation

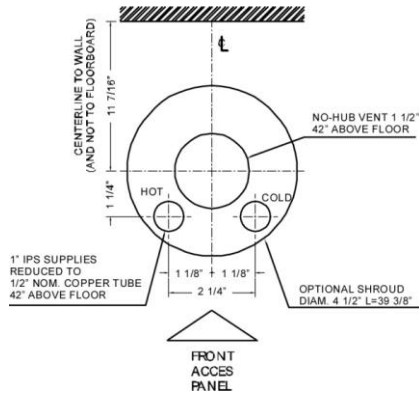


**Corner Junior Height Pedestal**

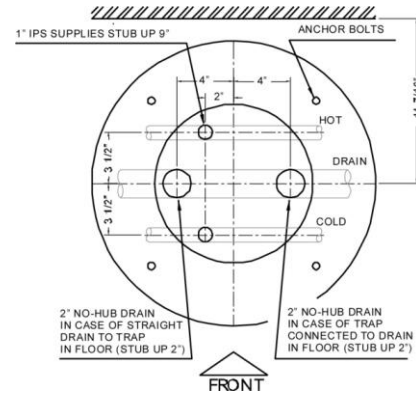
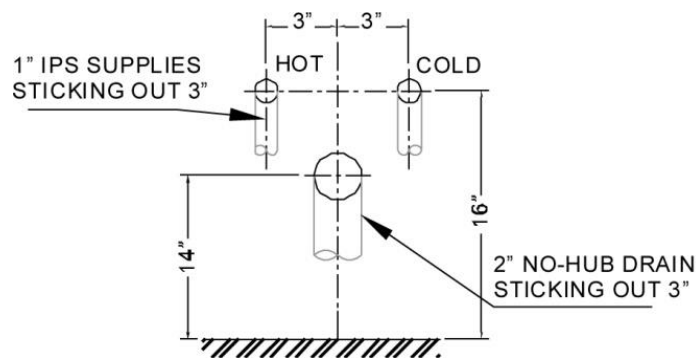


**Corner Wall Hung Pedestal**

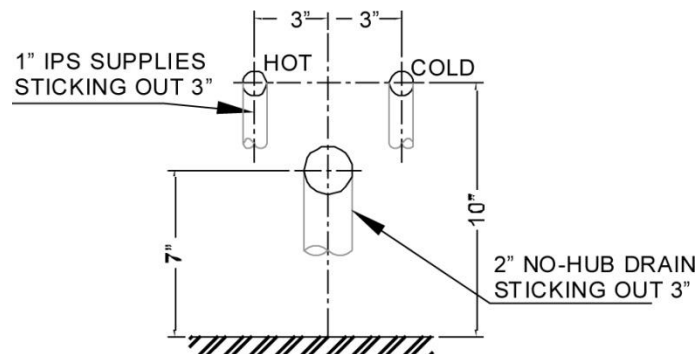
## Rough-in Dimensions Semi-Circular Units



### Supplies from ceiling

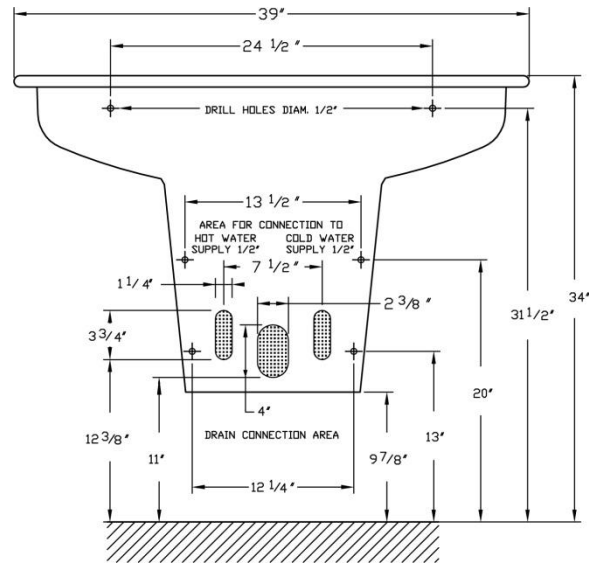
**Supplies from below/Drain to floor**

### Supplies & drain to wall

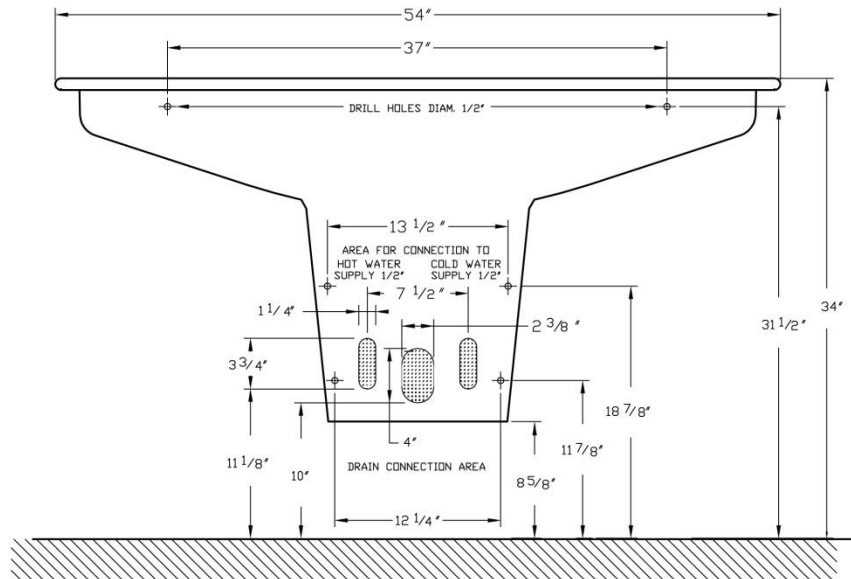


### Junior Height Semi-Circular Pedestal

# Installation



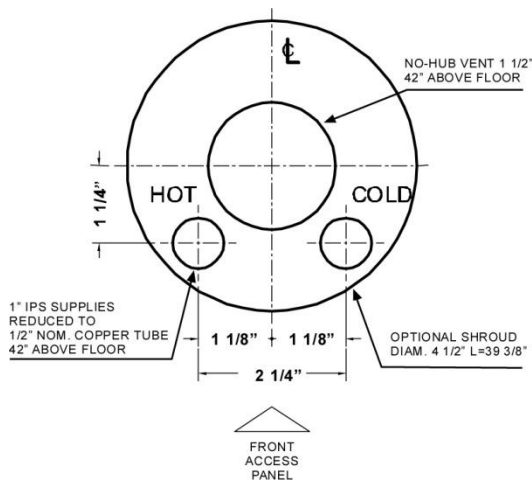
**Wall Hung Semi-Circular Pedestal for 39" bowl**



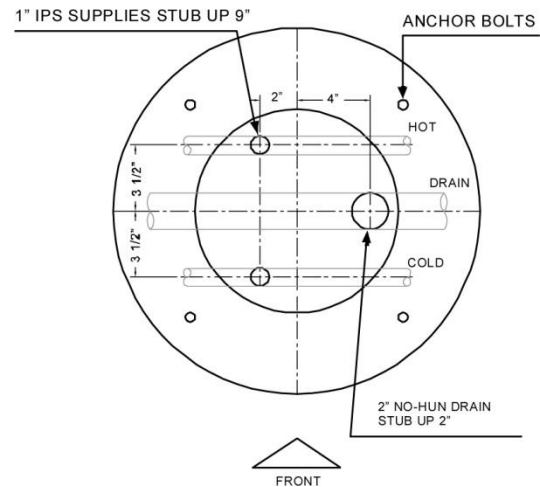
**Wall Hung Semi-Circular Pedestal for 54" bowl**

# Installation

## Rough-in Dimensions Circular Units



Supplies from ceiling



Supplies from below

# Installation

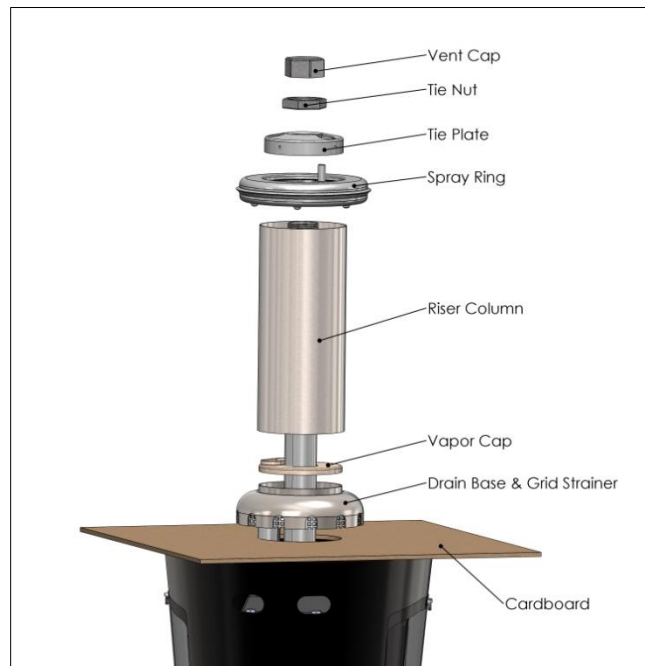
## Step 1: Unpack the washfountain

Remove the three main components of the Sanispray from the shipping cartons:

- The pre-assembled pedestal with the riser column
- The bowl box (box may contain one or two bowls)
- The soap dispenser

## Step 2: Prepare the pedestal for installation by removing the following

- 1 ½" galvanized vent cap
- 1 ½" galvanized tie nut
- Tie plate
- Sprayring
- Riser column
- Vapor cap
- Drain base with grid strainer
- Cardboard packing board



# Installation

## Step 3: Attach the rubber gasket to the pedestal in case of dislodgement

- Tilt the pedestal on its side and fix the rubber gasket to the bottom of the scuff base
- Check the rubber gasket on the top of the pedestal and reseal if necessary
- Check the gasket on the drain pan and reseal if necessary





# Installation

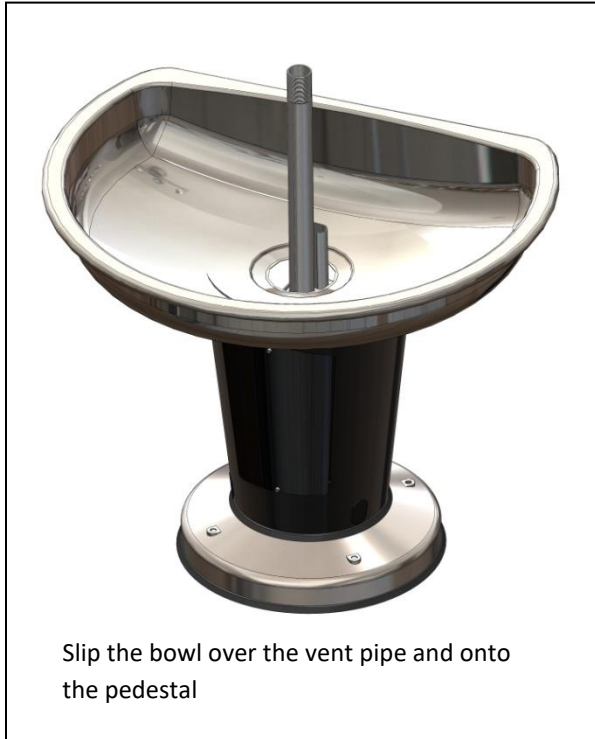
## Step 4: Loosen the drain pan

- Loosen the 4 bolts on the side of the pedestal. There are two bolts on each side
- Make sure the bolts have a play of  $\frac{3}{4}$ " before proceeding
- **This step is very important to prevent leaking from the drainpan**



# Installation

## Step 5: Install the bowl



# Installation



## Step 6: Connect the drain

- Move the washfountain to the final installation location and open the access panels
- The rough-in information indicates the position of the anchoring bolts, supplies and drains of the washfountain.

## Step 7: Anchor the pedestal to the floor

- Drill the four holes for the anchoring bolts and anchor the washfountain to the floor using the four lag bolts and anchors supplied.

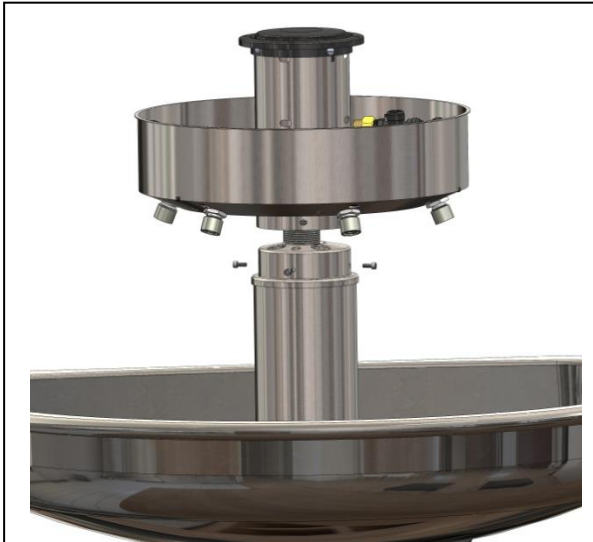
## Step 8: Connect the water supply

**Before connecting the fixture to the water supply make sure that all the lines are free of debris.**

- Connect the (optional) flexible supply lines to the water supply. It is advised to use Teflon tape on the threaded couplings.
- When flexible are used, make sure that the flexible lines are not twisted. Sharp bends should be avoided as well. Make sure that hot water supplies are connected to the hot inlet of the mixing valve and cold water to the cold inlet of the mixing valve.

# Installation

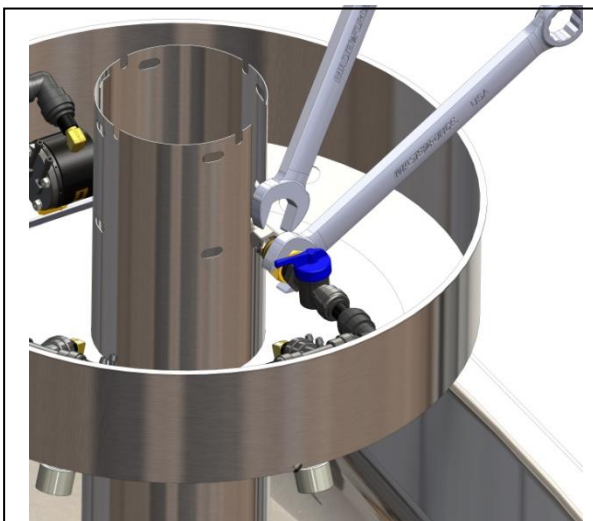
## Step 9: Install the head assembly



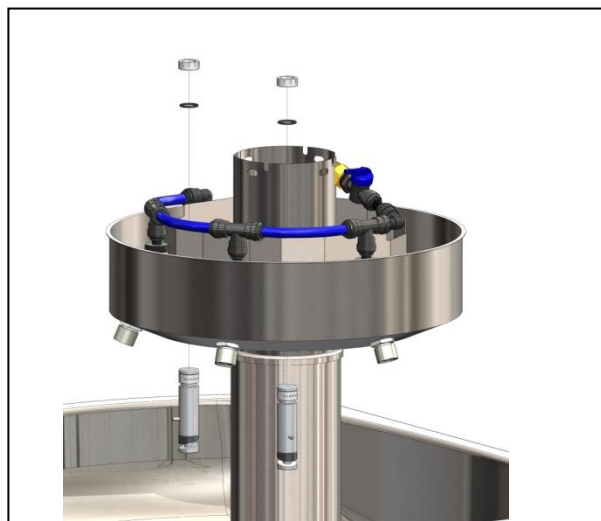
Center the water distribution head over the tie plate.



Make sure the drill holes of the tie plate and the collar of the head correspond. Connect the individual head to the tie plate by means of the allen screws

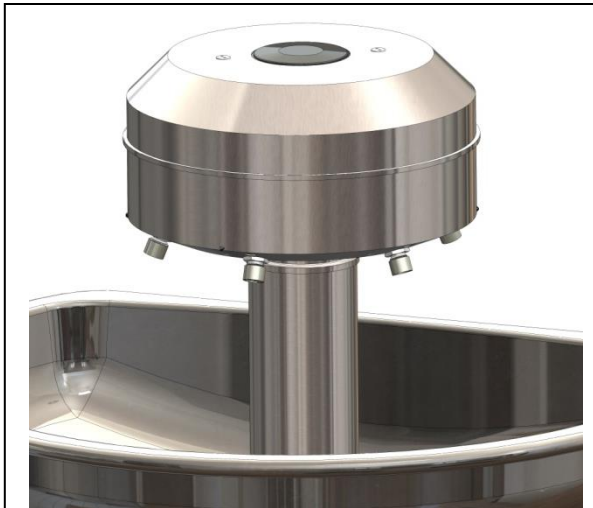


Hook up the flexible supply line to the sprayhead manifold. Always use a second wrench to hold when tightening the flexible to avoid twisting

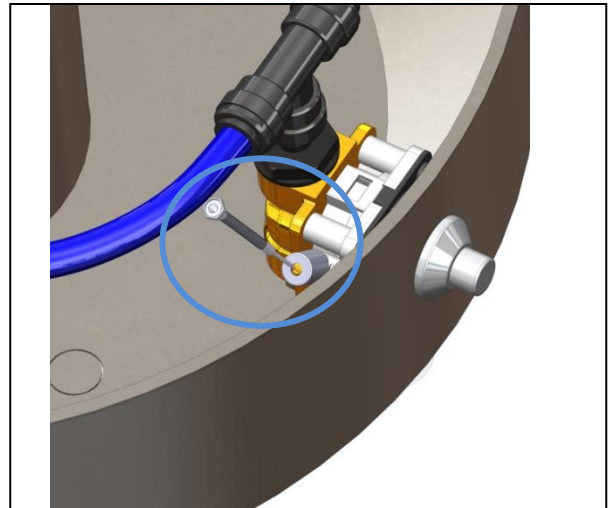


If the unit comes with the liquid option: install the soap valves through the openings in the bottom of the head. Make sure to install the black o-ring on the **inside** of the soap liner.

# Installation



Install the lid on the water distribution head and lock with the supplied keys. Leave the keys with the unit for the occupant of the building



**For Individual Hand Washfountains only:**  
The duration of the water flow can be changed by adjusting the screw on the timer. **Be careful not to bottom out the adjustment screw**

## Step 10: Adjust the thermostatic mixing valve temperature

- Prior to setting the mixing valve temperature it is necessary to have the hot water source operating at the normal output temperature and the cold water in the full on position. Strainer screens and check valves must be clean and free of debris before making adjustments.
- Test the temperature at the outlet nearest to the mixing valve; allow the water to run for at least one minute to achieve operating temperature.
- Adjust the valve by removing the white cap. Use the supplied wrench to adjust the spindle, clockwise to reduce and counter-clockwise to increase. Replace the cap and wrench when correct temperature is achieved.

# Installation

---

## Maintenance

### Solidsan® bowl

Solidsan® is a solid surface material made of acrylic modified polyester resins, aluminum trihydrate fillers and color granules. This synthetic compound material has an elegant granite-like appearance. Solidsan® is not only virtually indestructible and easy to maintain, but equally matches perfectly from an aesthetic viewpoint, this resulting in a remarkable design with soft, rounded shapes, ideal for the public washroom.

- Daily care: wipe the surface with soapy water or a damp cloth.
- Surface staining: clean the surface with soapy water or ammonia based cleansers.
- Stubborn stains and superficial scratches: clean the surface with an abrasive cleanser and a wet sponge. You can also use a green Scotch Brite® pad.
- Stubborn scratches: sand with 400 grit sandpaper and then clean with an abrasive cleanser and a green Scotch Brite® pad.
- AVOID contact with harsh chemicals such as drain cleansers and paint removers.
- AVOID contact with hot pots or heat producing appliances.

### Stainless steel bowl

#### Things to Avoid

- Avoid scouring a Stainless steel surface across the satin finish lines. Scouring across the satin finish lines can damage the original Stainless steel grain finish. Never use an abrasive scouring pad.
- Don't allow liquid soap or other household cleansers to dry on the Stainless steel surface. Most brands contain chemical additives, which will affect the finish.
- Never leave solutions of chlorine bleach and water on your Stainless steel surface for extended periods of time. Chlorides, which are found in most soaps, detergents, bleaches, and cleansers, are very aggressive to stainless steel. If left on too long they can cause surface pitting.
- Don't use a steel wool pad to clean your Stainless steel. Steel wool pads have a tendency to break apart and small particles of steel can become embedded in the surface of the sink. The steel particles will rust and will give the appearance that the Stainless steel itself is rusting.
- Never leave wet sponges, cloths, or cleaning pads on the Stainless steel surface. This can lead to surface rust.

#### Things to Do

- Rinse or clean surface after use. Clean with warm, soapy water.
- Avoid caustic chemicals. Avoid exposing your appliance to strong chemicals, such as paint removers, oven cleaners, etc. If contact occurs, quickly flush the surface with water.
- Follow the grain. When cleaning the Stainless steel surface of your sink, be sure to rub in the direction of the grain finish lines.

# Installation

## Parts Breakdown Individual Piezo



**11IC**  
Supply Set



**32TEMP**  
Tempered Supply Set



**HC160**  
Mixing Valve



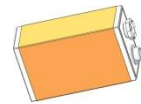
**P2929**  
0.5 gpm aerator



**P35005**  
Piezo Touch Button



**SPVL**  
Soap Valve



**P3100**  
9V Battery



**PZ1800E**  
Valve Assembly  
with Elbow  
Connector



**PZ1800M**  
Valve Assembly  
with T-connector



**P2801**  
Gasket Drain Pan



**P2802**  
Gasket Pedestal to  
Bowl

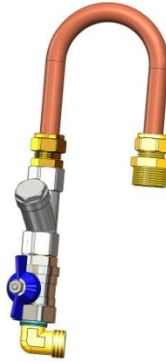


# Installation

## Parts Breakdown Individual Hand



**11IC**  
Supply Set



**32TEMP**  
Tempered Supply Set



**HC160**  
Mixing Valve



**P2929**  
0.5 gpm aerator



**P2868**  
Timer



**SPVL**  
Liquid Soap Valve



**P5030EH**  
Valve Assembly  
with Elbow  
Connector



**P5030MH**  
Valve Assembly  
with T-connector



**P2801**  
Gasket Drain Pan



**P2802**  
Gasket Pedestal to  
Bowl