




ClevaCare® Shower

CLEVA

Strain Relieving Caregiver Shower System

Technical	Certifications	Materials	Barrier Free
Inlet: 1/2" NPT - Male Outlet: 1/2" NPT - Male Working Pressure Range: 8 - 72 psi Working Temperature Range: 41-194°F	 ASME A112.18.1 CSA B125.1 (2012)	Construction: Brass swing arm with stainless steel spring High Polished Chrome finish	NA

Description

The ClevaCare Shower Arm was invented to solve many of the problems encountered when showering immobile persons. ClevaCare helps make the bathing of injured and elderly persons faster, safer and more dignified.

ClevaCare reduces physical strain on carers when bathing patients, and saves time for carers by facilitating easier and faster work routines. It also saves money for the carer by eliminating the breakage of hand held showers when they are dropped.

ClevaCare's unique retractable spring arm ensures an air gap is maintained, thereby reducing the risk of cross contamination due to backflow, and also allows a more thorough clean of the patient as the greater reach gives access to all sides of the patient.

Variations:

CLEVA10: Includes shower arm and stainless steel fasteners.

CLEVA20: Includes shower arm, stainless fasteners, 24" inlet hose, 65" outlet hose, and handshower.

Features and Benefits

- Reduces physical strain on carers when bathing patients, providing a safer working environment for them

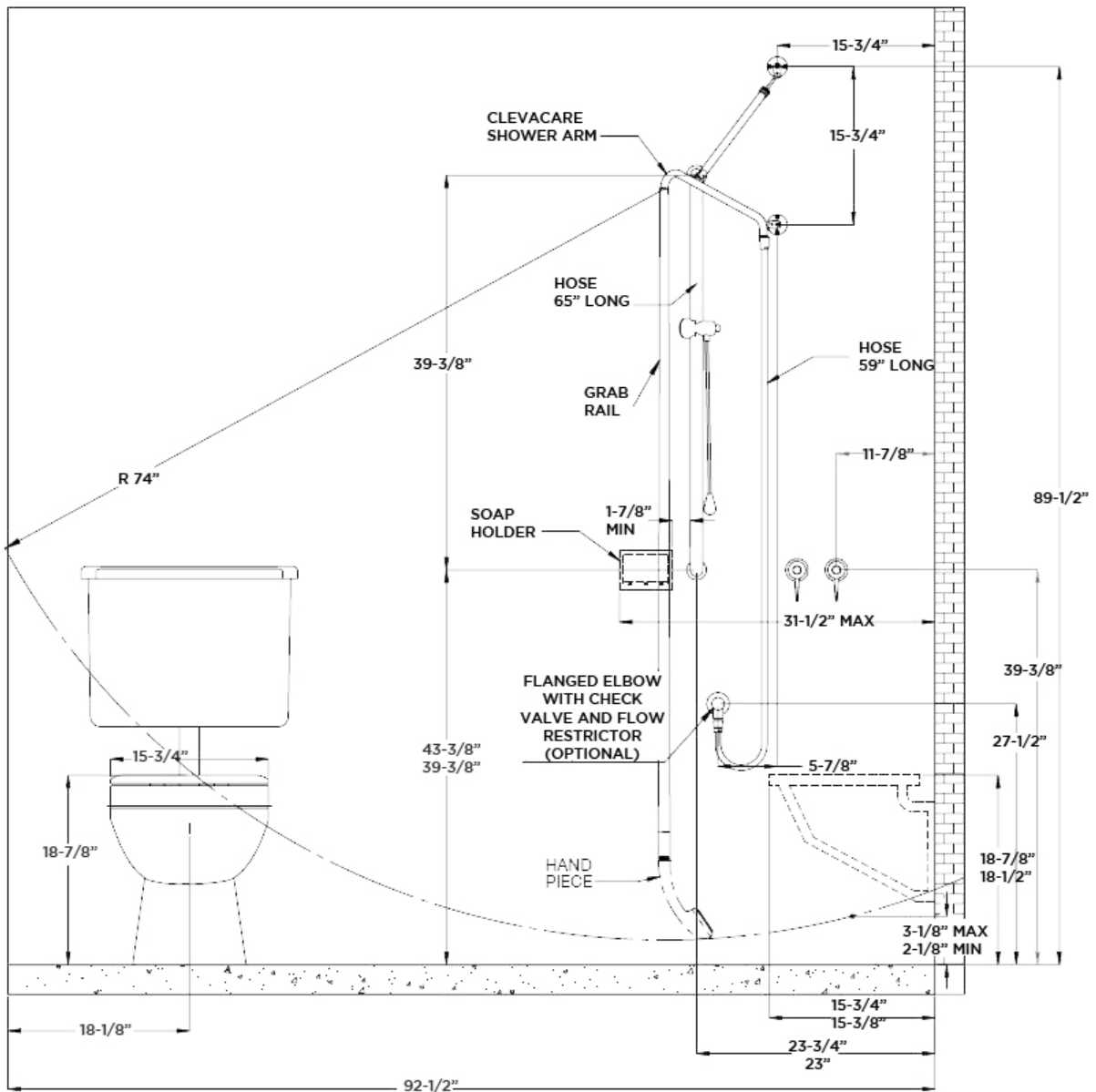
- Saves money, by eliminating the breakage of hand held showers when dropped
- Hygienic- by reducing the risk of cross contamination due to backflow, as the hose is unable to be left in areas with risk
- Suits all size showers from 36"x36" shower stalls, down to 94" ceiling heights
- With the extra hose length, this allows greater reach and easier bathing enabling the patients to feel safer and more comfortable and enjoy the bathing experience
- Saves time – facilitating easier and faster work routines
- Hose is positioned in front of the patient, keeping the hose off the patient when showering

Technical Information

- Inlet: 1/2" NPT - Male Thread
- Outlet: 1/2" NPT - Male Thread
- Working Pressure Range (psi): 8 Min - 72 Max
- Working Temperature Range (°F): 41 Min - 194 Max
- Construction: Brass
- Finish: Heavy Duty Chrome



WARNING: Cancer and Reproductive Harm
www.P65Warnings.ca.gov



001	Base Model Number (must specify)	
<input type="checkbox"/>	CLEVA10	Strain Relieving Shower Arm
<input type="checkbox"/>	CLEVA20	Strain Relieving Shower Arm, Hoses and Hand Shower